

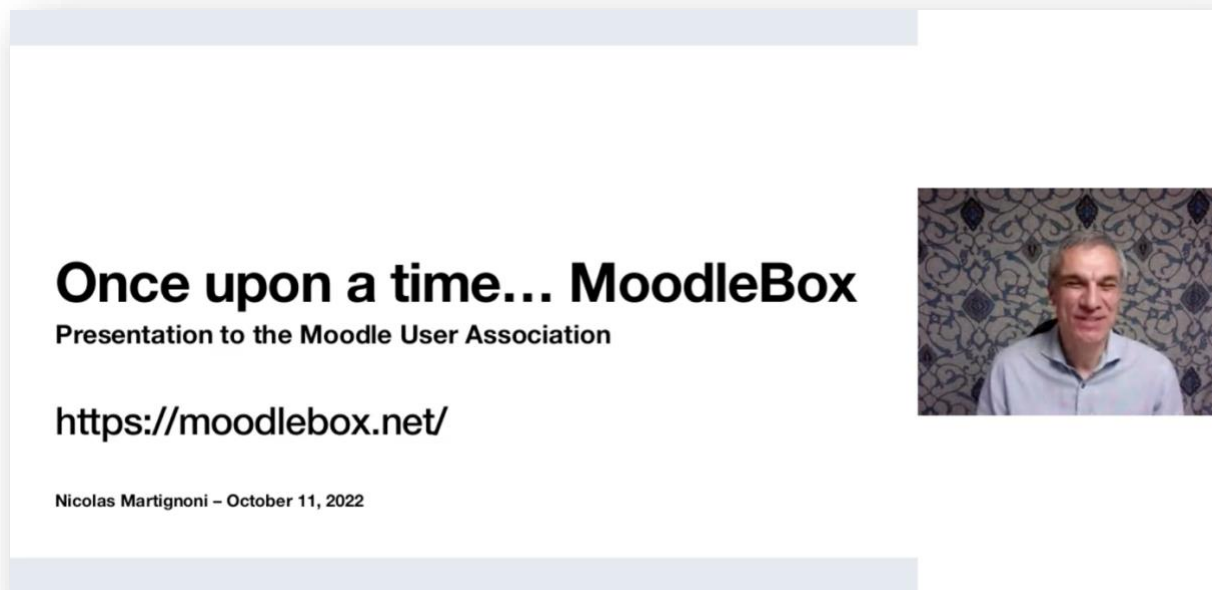
# MUA Town Hall Summary – 11 October 2022

Presentation Topic:

## “Once upon a time... MoodleBox”

Speaker: Nicolas Martignoni ([MoodleBox](#)),

Moodle Users Association Town Hall Host: Harald Schnurbusch



The October 11<sup>th</sup> Moodle Users Association Town Hall (held at 6pm UTC) featured Nicolas Martignoni, the founder and maintainer of MoodleBox. MoodleBox is a self-contained Moodle server with Moodle content to allow classes of students without internet to use Moodle LMS for education. Nicolas is a math and IT teacher from the French-speaking part of Switzerland. There is now a 63-minute recording of this presentation available to members on the [MUA website Town Hall recordings](#).

## What is MoodleBox?

MoodleBox is a very small server, able to fit in the palm of a person's hand. It is also portable. For example, at a recent Moodle conference, one participant walked around the conference with a MoodleBox in his pocket, inviting colleagues to directly log into his own Moodle course. This concept was developed in 2016 by Nicholas in order to find a way to provide education via Moodle in situations where there is no internet or even no electricity, because the MoodleBox can be driven by solar power if necessary.

Developed with Raspberry Pi, an inexpensive (\$35usd) computer, the 2016 version of MoodleBox is shown here in its original hardware size.

## MoodleBox hardware and software design

### February 2016

- The Raspberry 3 Model B
- 1.4GHz 64-bit processor
- 1 MB RAM
- On-board Wi-Fi chip



### July 13, 2016

- MoodleBox 1.0

<https://moodle.org/mod/forum/discuss.php?d=331170>

## How to get MoodleBox working

Nicolas demonstrated the steps to install and setup MoodleBox with a Moodle site. Within a few minutes, this site can be loaded with Moodle course content and then be used as an intranet site for students with mobile phones, tablets or computers to access. These are the steps involved:

- Download the image
- Copy it on a micro SD-card
- Insert the SD-card into your RPi
- Boot the RPi and wait a few seconds
- Connect to the MoodleBox wireless network
- Open <http://moodlebox.home/> on your browser
- That's it!

Other Moodle admin settings for installation are shown in the video recording.

## Where is MoodleBox being used?

There are several use-cases that Nicolas has been aware of, including:

- Refugee camps in Syria and Lebanon
- Prisons, such as the Caen Detention Centre in France
- Wilderness camps for teacher training in Germany
- Gaming environments for chemistry teaching in France
- Remote area schools with no internet or reliable electricity

The courseware used in these cases may have to be adapted for the hardware/software strategy of MoodleBox, because embedded external links in course content will, of course, not work in an enclosed intranet.

At the recent MoodleMoot Global in Barcelona, representatives of Inclusiv Education, working with Save the Children, demonstrated their field expertise using MoodleBox. They have boosted the hardware to hold 2TB of courseware, built in cooling fans for hotter environments, and added an antenna to serve classrooms of 30 students at a time. The cost of the upgraded MoodleBox (shown on the right) in this configuration is higher but is still reasonable.



[Photos of their work in Africa with MoodleBox](#) are shown here, and [a video by their director, Natalie Denmeade](#), tells the story of this application. This shows how MoodleBox is becoming a core educational tool with NGOs in their work for developing countries and relief areas.

The Moodle Users Association wishes to thank Nicolas for sharing his work and encouraging us teachers and developers to use MoodleBox in all of these environments, particularly where digital tools and internet resources are difficult to use in less-developed or war-ravaged areas.

To contact Nicolas Martignoni: @nmartignoni or [nicolas@martignoni.net](mailto:nicolas@martignoni.net)  
Watch for further presentations on this topic in the future.