



Okinawa Guide for **Travel** Organizers



Japan. Endless Discovery.

Sample tour plan

South

Shurijo Castle Park is one of the must-see spots in southern Okinawa. In the Shuri area you can observe the ancient Ryukyuan culture still alive in its townscape. The highlight of the Naha City area is Kokusai Street with its Makishi Public Market, where you can get a glimpse into the Okinawans' way of life and their food culture, as well as numerous souvenir shops and eateries. Located along the coastline are beautiful beaches and cafés, and the area is also known for having a number of sacred sites such as utaki.

Approximate distance and driving time

- A Shurijo Castle**
20 km/40 min
- B Seifa Utaki**
7.5 km/15 min
- C Mibaru Beach**
7.1 km/14 min
- D Okinawa World**
8.2 km/17 min
- E Peace Memorial Park**
3.5 km/7 min
- F Himeyuri Monument**
1.5 km/3 min
- G Ryukyu Glass Craft**
3.5 km/7 min
- H Cape Kyan**
15.5 km/35 min
- I Japanese Navy Underground Headquarters**

Approximate distance and driving time

- A Ocean Expo Park**
7 km/15 min
- B Nakijin Castle Ruins**
60 km/120 min
- C Kouri Island**
15 km/30 min
- D Okinawa Fruit Land**
15 km/30 min
- E Nago Pineapple Park**
200 m/1 min
- F NEO Park**
4 km/10 min
- G Higashi Village**
30 km/60 min
- H Kaichu Road and Hamahiga Island**
30 km/60 min
- I Cape Manza**
15 km/30 min
- J Ryukyu Mura**
14 km/30 min
- K Mihama American Village**



The area surrounding Shurijo Castle, which was once a thriving castle town, is dotted with bingata specialty shops, goldsmiths' studios and awamori distilleries. Tourists are encouraged to take a stroll or ride a bike down the four-kilometer-long cobblestone street of Kinjo-cho.



Shurijo Castle prospered as the Ryukyu Kingdom's center of politics, diplomacy and culture and is now inscribed on UNESCO's World Heritage List. Destroyed by fire during World War II, Shurijo Castle was rebuilt in 1992, and the castle and nearby historic assets, including a number of gates leading to Shurijo Seiden as well as the castle walls, have become a historical park.



One of seven utaki (sacred sites) in Okinawa, Seifa Utaki served as a central place for ancestor worship, nature worship and national festivities in the days of the Ryukyu Kingdom. Seifa Utaki has been designated a UNESCO World Heritage site.



At this shallow water beach, nestled in a pristine natural environment, you can enjoy viewing schools of tropical fish up close from a glass-bottom boat.



One of the key features of the park is the Cornerstone of Peace inscribed with the names of individuals, including civilians and Japanese and foreign soldiers, who died in the Battle of Okinawa.



Okinawa World is a theme park consisting of a scenic village of old-time Okinawa, Gyokusendo and the Habu Park. Here visitors can enjoy eisa dance performance and a number of craft workshops. Gyokusendo is a limestone cave considered to be the most beautiful in East Asia. Adjacent to Okinawa World is the Valley of Gangara, full of formations and caverns created by limestone erosion hundreds of thousands of years ago.



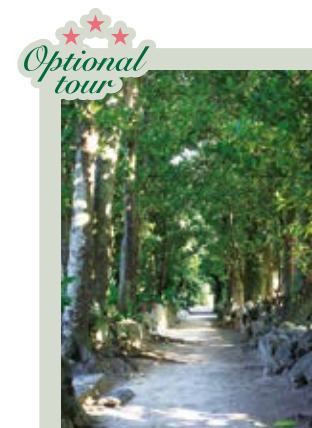
This site is where the Japanese Navy established its headquarters during the Battle of Okinawa. You can tour several of the tunnels and view the operations room. There is also a museum on the premises.



Over 70 internationally renowned fashion and merchandise brands are available at Okinawa's first outlet mall, Ashibinaa.

North

Northern Okinawa, including the Motobu Peninsula, where the Okinawa Churaumi Aquarium is located, is an oasis of untouched nature. Here are two sample tours to choose from depending on preference: the Nature and Scenic Beauty Tour, which allows you to experience the dynamic nature of this subtropical island in Higashi Village and to visit scenic spots in the eastern coastal area; and the Multi-activity Tour, which takes you to Kouri Island and various other sightseeing attractions on the west coast.



Located in the northern corner of Ocean Expo Park is Emerald Beach with its beautiful white coral sand. In Bise, situated right next to the park, you can enjoy a tour through fukugi tree-lined streets on a buffalo-drawn cart.



Ocean Expo Park (Okinawa Churaumi Aquarium)

Ocean Expo Park is home to the Oki-chan Theater, where a group of dolphins perform a spectacular show, and the aquarium, where you can observe huge whale sharks gliding in the biggest water tank in Asia. Also on the premises are a subtropical botanic garden, the Traditional Okinawa Village and much more.



Nakijin Castle Ruins

The Nakijin Castle Ruins are a place of historical importance and have been inscribed by UNESCO as part of the World Heritage. Perched on a 100-meter-high hill, the castle ruins command a panoramic view and are well known for an annual cherry blossom festival.

Plan A

E Nago Pineapple Park

At the Nago Pineapple Park, you can enjoy a tour through the beautiful gardens and pineapple fields on a pineapple cart. Here you can have the opportunity to sample fresh pineapple and pineapple wine.

F NEO Park

NEO Park provides the opportunity to see animals and plants in an environment close to their natural habitat. In its aviaries visitors can observe birds native to Africa and Central and South America flying right in front of them.



D Okinawa Fruit Land

This is an indoor facility where you can have a fun experience in a subtropical climate. Visitors can observe various butterflies and birds while enjoying a tour among subtropical fruit trees.



C Kouri Island

Kouri Island, a small island with a radius of one kilometer, boasts wild and untouched nature. The one-kilometer-long Kouri Bridge, opened in 2005, made the island a popular spot for a leisurely drive.

Plan B



Cape Manza

Cape Manza is a scenic spot where you can enjoy Okinawa's rich natural environment while looking out on a beautiful coral reef in the crystal clear water and watch the waves breaking on the shore.

H Kaichu Road and Hamahiga Island

The Kaichu Road is a 4.7-kilometer-long inter-island causeway connecting the Katsuren Peninsula in Uruma City with Henza Island. You can't help but pull over to take pictures of the beautiful seascape when driving on the Kaichu Road. The creator gods of Ryukyu are worshipped on Hamahiga Island, which can be reached via the bridge from Henza Island.



G Higashi Village

Participating in one of the ecotours offered in Higashi Village is the best way to explore Okinawa's rich subtropical features, including the Tanaga-gumui ravine and the mangrove forest in Kesashi.



Ryukyu Mura

Ryukyu Mura is composed of old Okinawan homes with red-tile roofs. Guests will have the opportunity to try their hand at making traditional Okinawan crafts.



Mihama American Village

Mihama American Village, a waterfront area in Chatan, consists of a movie theater and hotel and shopping malls and is crowded with people till late at night.



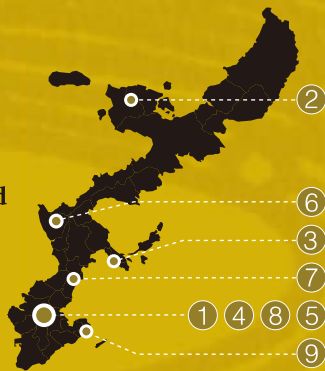
Murasaki Mura is reminiscent of the grandeur of the Ryukyu Kingdom. This cultural theme park offers a variety of arts and crafts workshops and classes in cultural activities for visitors. In addition, karate lessons are available in various languages.

The World Heritage

Treasures of the Earth & Mankind

Ryukyu castles were built between the 14th and 18th centuries at a time when the Ryukyu Kingdom was united and actively trading with Asian countries. They took on even greater importance after nine castle sites were designated part of The World Heritage by UNESCO in December 2000. These historic remains are essential for understanding the history of Okinawa.

Location Map



Shurijo Castle Park

Naha City

Shurijo Castle is believed to have been built between the 13th and 14th centuries for the use of King Satto of Urasoe Castle. After the unification of the Ryukyus under King Sho Hashi, Shurijo Castle became the kingdom's political and ceremonial center. It remained the center of government until 1879, when the Ryukyu Kingdom was annexed to Japan as Okinawa Prefecture. During the Battle of Okinawa the castle was destroyed but was rebuilt in 1992, becoming a national park. Visitors can tour the grounds for free except for the main compound and the Tamaudun Royal Mausoleum.



Nakijin Castle Site

Nakijin Village

Located in Nago, Nakijin Castle is believed to have been built in the 13th century as a place of worship. Recognized as a National Historic Remains Site in 1972, the grounds' 14 acres feature numerous religious objects such as prayer nooks and artifacts of past Ryukyuan and Chinese trade.



Katsuren Castle Site

Uruma City

Once ruled by Lord Amawari, Katsuren Castle is believed to be the oldest castle in Okinawa and was prosperous in agriculture and trade throughout Asia between the 14th and 15th centuries. Both Katsuren Castle and its inhabitants were destroyed during the unification of the Ryukyus.



Stone Gate of Sonohyan

Naha City

Designed by the master craftsman Nishito, who erected the walls of Shurijo Castle, Sonohyan was commissioned by King Shoushin in 1519. The stone gate, known as "utaki," was built as a portal for the gods and as a symbol of sanctuary for the community and neighboring villages.



Shikinaen Royal Garden

Naha City

Originally built as a summer residence for the Ryukyuan royal family in 1799 and restored in 1995, Shikinaen has a garden with a Chinese-style hexagonal pavilion and arched bridges, and played an important role in welcoming visiting Chinese envoys and others during the Ryukyu Kingdom era.



Zakimi Castle Site

Yomitan Village

Built in the early 1400s by architect and feudal warlord Gosamaru of Chuzan, this site was used by the Japanese army as a missile base during World War II. Recognized as a National Treasure in 1972, the castle's double wall and Okinawa's oldest arch-shaped stone gate still stand today.



Nakagusuku Castle Site

Kita-Nakagusuku Village

Built by the architect and feudal warlord Gosamaru of Chuzan between the years of 1454 and 1460, Nakagusuku Castle escaped damage during the Battle of Okinawa, leaving it the best preserved of all Okinawan citadels. The castle's vantage point offers a breathtaking view of its surrounding area.



Tamaudun Royal Mausoleum

Naha City

In 1501, King Shoushin had Tamaudun built as the royal family's mausoleum, moving the remains of his father, King Shoen, and mother from Miagemuiudun. The remains of the king and queen were laid to rest in the East Room, while other family members were interred in the West Room.



Sefa-Utaki/sacred site

Chinen Village

Thought to be the most sacred location in Okinawa, this site was originally exclusive to women. Each year the kings would visit the site and pray for a bountiful and rich harvest. The triangular cavern, formed naturally by gigantic rocks, was designated a World Heritage site by UNESCO in December 2000.

Islands of longevity Okinawa



Okinawa has the highest concentration of centenarians on earth, for which experts credit Okinawa's culture and traditional lifestyle. The Okinawan diet, daily physical activity, anti-stress approach to life and other cultural factors converge to delay the onset among older Okinawans of chronic diseases that are common in the West. Indeed, the world is fascinated by the lifestyle -- especially the dietary habits -- of elderly Okinawans.

The traditional Okinawan diet has been held up as a model for healthy aging and longevity. The elements of this health-promoting plan are chronicled in a couple of best-selling books, "The Okinawa Program" and "The Okinawa Diet Plan," by gerontology researchers Drs. Craig Willcox, Bradley Willcox and Makoto Suzuki. Based on 25 years of research, the first book weaves stories of Okinawa's oldest old with evidence-based medicine and presents an anti-aging lifestyle program focusing on diet, exercise and stress management. The follow-up diet book features more than 150 recipes in an easy-to-follow eating plan that helps you get leaner and live longer without feeling hungry. Readers can also link to the online diet and health support program at www.okinawa-diet.com.

Ogimi Village in northern Okinawa has one of the islands' largest concentrations of centenarians and is home to Emi's Place. It offers Okinawan home cooking featuring local vegetables and seaweed as well as the lime-like shikwasa, believed to be one of the secrets of longevity. Emi's Place uses fresh, seasonal Okinawan vegetables, which generally have a distinctive aroma and color coupled with bitterness and a unique texture and which must be consumed promptly after harvesting due to their fleeting freshness.

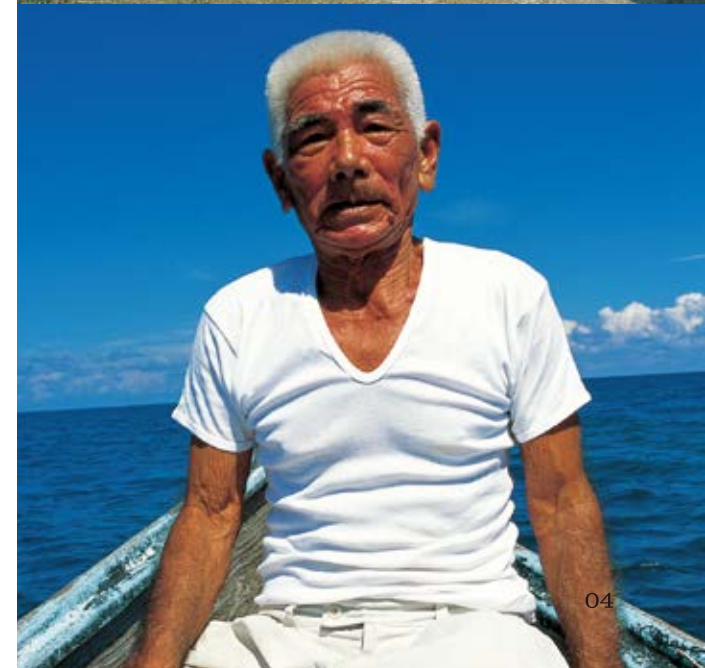
Besides diet, other factors contribute to longevity in Okinawa such as the spirit of mutual assistance and an easygoing southern island attitude that helps keep stress at bay.

Local northern Okinawa municipalities in addition to Ogimi Village will cooperate in centenarian research if arrangements are made in advance with the relevant municipal authorities.



'The Okinawa Program'

This New York Times best-selling book introduces keys to Okinawan longevity based on 25 years of research. An Amazon.com Best Book of 2001, it was also featured on Oprah Winfrey and CNN and in Time magazine. For more information go to www.okinawa-diet.com and www.okicent.org.





World-class diving spots

Thanks to the warm subtropical climate, one can dive year-round in the seas off Okinawa, which offers dive sites on par with numerous well-known locations including the Great Barrier Reef in Australia. Located in the southernmost part of Japan, the Ryukyu Archipelago, stretching 1,000 kilometers from east to west and 400 kilometers from north to south in between the Pacific Ocean and the East China Sea, comprises 160 islands. The various dive sites, each possessing its own unique characteristics, offered by those many islands are the attraction of diving in Okinawa.

The clear water and beautiful coral reefs around the Kerama Islands, for example, are rated among the best in the world. In terms of

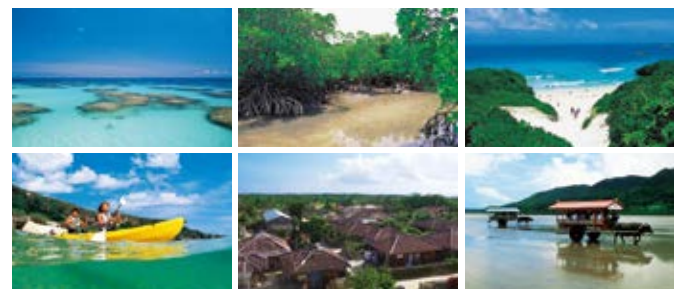
variety of coral, approximately 200 of the 800 recognized species are found around the Ryukyu Islands. Near Ishigaki Island, huge manta rays will swim with you. A mysterious underwater monument dive site can be found at Yonaguni Island. All these exceptional diving experiences, normally possible only in such world-renowned places as the Bahamas, Palau and Australia, are here for divers to enjoy. Besides the diving, the marine activities list continues on to include snorkeling, fishing, eco tours by kayaking through mangrove swamps and more. For additional information, visit the Okinawa Convention & Visitors Bureau's English Web site at <http://www.ocvb.or.jp/card/ja/0600003569.html>

Diving and Island Hopping Tours



Kabira Bay rates three stars in the Michelin Green Guide Japan, while Ishigaki Island itself has earned two stars.

This map indicates the approximate physical location of the islands neighboring the main island of Okinawa.



Neighboring islands such as Ie, Ihei, Iheya and the Kerama Island group, known for its diving and whale watching, as well as designated prefectural park Kume Island, are among the destinations recommended for a day trip from the main island of Okinawa. Every March, off the coast of Miyako Island, when the tides reach their lowest point, a vast expanse of reef called Yaebishi is exposed, a natural wonder that attracts crowds of tourists and locals alike. The Yaeyama Islands, with the beautiful hue of the surrounding waters known as "Yaeyama Blue," include Ishigaki, the tourism center of this group, and Iriomote, referred to as the Galapagos of Asia, with enormous mangrove swamps set amidst the island's pristine nature. Taketomi Island features the picturesque village of traditional red-tile-roof houses, complimented by white sand paths well traveled by water buffalo. Most of these outer islands have good diving as well.

Travel times to the outer islands

Yaeyama Islands	
① Ishigaki Is.	1 hour from Naha by plane
② Taketomi Is.	10-20 min. from Ishigaki Port by speed craft or ferry
③ Iriomote Is.	30-55 min. from Ishigaki Port by speed craft or ferry
④ Kohama Is.	15-40 min. from Ishigaki Port by speed craft or ferry
⑤ Kuro Is.	25-35 min. from Ishigaki Port by speed craft or ferry
⑥ Hateruma Is.	60-120 min. from Ishigaki Port by speed craft or ferry
⑦ Yonaguni Is.	30 min. from Ishigaki Island by plane / 4 hours by ferry
Miyako Islands	
⑧ Miyako Is.	45 min. from Naha by plane
⑨ Ikema Is.	30 min. from Miyako Island by car
⑩ Irabu Is.	15-25 min. from Taira Port by speed craft or ferry
⑪ Tarama Is.	20 min. from Miyako Island by plane / 120 min. by ferry
Kerama Islands	
⑫ Tokashiki Is.	35-70 min. from Tomari Port by speed craft or ferry
⑬ Zamami Is.	50-120 min. from Tomari Port by speed craft or ferry
⑭ Aka Is.	50-90 min. from Tomari Port by speed craft or ferry
⑮ Kume Is.	30 min. from Naha by plane / 180 min. from Tomari Port by ferry

Ishigaki City Tourist Association >> <http://www.yaeyama.or.jp/en>



Left photo

Swimming with whale sharks

Everybody, including beginners, can touch and observe two friendly whale sharks while diving offshore from the Yomitan fishing port.

Right photo

Mystery diving

Located at Yonaguni Island, the currently controversial "underwater monument," which has sparked questions as to its man-made or natural origins, is a site visited by numerous divers.

*Services offered in English and German at Shocking Blue diving shop (see next page), and in English at Hotel Irifune's diving shop (P19).

Diving shops

Benthos Divers

Tel: 81-98-966-1730 / E-mail: divers@benthos.info
<http://www.benthos.info>

Hot Mangrove (Iriomotejima Island)

Tel: 81-980-84-8282 / E-mail: info@hotmangrove.com
<http://www.hotmangrove.com>

Marea Okinawa

Tel: 81-98-942-2200 / E-mail: okinawa@marea.jp
<http://www.marea-oki.jp/>

Marine House Seasir

Tel: 81-90-5927-5598 / 81-90-8668-6544 / E-mail: tee@seasir.com
<http://www.seasirenenglish.com/>

Natural Blue

81-90-9497-7374 / E-mail: info@natural-blue.net
<http://www.natural-blue.net/english.html>
<http://www.natural-blue.net/chinese.html>

Reef Encounters

Tel: 81-98-995-9414 / E-mail: reservations@reefencounters.org
<http://www.reefencounters.org/>

Southern Reef Okinawa

Tel: 81-98-983-7777 / E-mail: chura@southern-reef.com
<http://www.southern-reef.com/>

Sawes Yonaguni (Yonaguni Island)

Tel: 81-980-87-2311 / E-mail: sawes@yonaguni.jp
<http://www.yonaguni.jp/en/>

Seamen's Club Ishigaki Resort Hotel (Ishigaki Island)

Tel: 81-980-88-2131 / E-mail: info-front@seamensclub.co.jp
<http://www.seamensclub.co.jp/>

South to South

Tel: 81-98-867-4445 / E-mail: south4445@nirai.ne.jp
<http://www.south4445.com>

Spitz Dive Center

Tel: 81-98-965-0012 / E-mail: spitz@m1.cosmos.ne.jp
<http://www.cosmos.ne.jp/~spitz/>

Top Marine Zanza

Tel: 81-98-956-0070 / E-mail: info@top-mz.com
<http://www.topmarine.jp.com>

Karate

the martial art of Okinawa

Centuries ago, Okinawans nurtured “te” (hand), a unique art of self-defense devoid of weapons, the original karate. From Okinawa, the true birthplace of this art, karate spread to the world and today has 50 million fans in more than 140 countries.

Existing before Chinese kung fu was introduced, te flourished in the 15th century. Later, through cultural and commercial exchanges with other Asian countries, the inhabitants of the Ryukyu Kingdom of that time blended the local martial art with martial arts from other countries, mainly China. Later subjugated by the Satsuma clan of Kagoshima in 1609, Ryukyans were prohibited from carrying or using weapons; however, they continued training in secret to create a unique martial art known today as karate.

Considered the father of modern karate, Gichin Funakoshi went to mainland Japan in 1922 to introduce karate there. This marked the beginning of the spread of this martial art throughout the world, and in 1936 the name “karate” (empty hand) was officially chosen. After World War II, the US administration in Japan issued an order prohibiting the practice of judo and kendo, but karate training was permitted, gaining in popularity with the development of tournaments and “kumite matches” in the 1960s.

In Okinawa, the major styles of karate are Shuri-te, today known

as Shorin-ryu; Naha-te, which later became Goju-ryu; and Uechi-ryu. While Shuri-te was mainly developed by nobles in the environs of Shuri Castle, Naha-te, like Uechi-ryu, finds its roots in China with moves that look more like those of animals. Karate is characterized by the use of fists, toes, elbows and knife-like hands, and traditionally, training comprises kata practice, pre-arranged kumite drills and kumite, or sparring. Along with karate, kobudo, or weaponry, was also developed through the use of various everyday tools. Among the many weapons famous today are the nunchaku, originally a horse bit, and the tonfa, a grinder handle from which the modern side-handled police baton is derived.

Okinawa is proud of its karate tradition. As its birthplace, karate can be seen in many of the festivals held island-wide, and Okinawa has numerous monuments dedicated to the masters who formulated this art. But more important, there are hundreds of dojo or gyms in Okinawa where karate is transmitted to younger generations so that the art, based not on the sport but on character building and self-defense, never disappears.

Text by Miguel Da Luz

Experienced Okinawan karate in France and came to Okinawa in 1993. Charmed by Okinawa, he lives today in Naha City and is the editor of The Okinawan.

and to contribute to its further expansion and development as a part of Okinawa's cultural heritage. In addition, by hosting overseas karate practitioners and encouraging their involvement with the local community, the center strives to promote international understanding as well as international experiences for local youth. For further information: 098-921-1080 / www.okinawakarate.jp



Specialists in Okinawa-related topics



Makoto Suzuki
Researcher in longevity science
Prof. Emeritus, Univ. of the Ryukyus, Director of Okinawa Research Center for Longevity Science, P.I. of Okinawa Centenarian Study, Co-author of “The Okinawa Program” and “Japanese Centenarians” based on 34 years of medical and sociological research.
E-mail: suzuki@okikenju.or.jp



Till Weber
Awamori expert
Associate professor, European cultures department, University of the Ryukyus. Chairman of Awamori Lovers' Society, established by foreign residents of Okinawa; available as an expert on awamori and adviser for tours of awamori distilleries.
E-mail: weber@l.u-ryukyu.ac.jp



Tony Jenkins
Historian
Professor, Okinawa Prefectural University of Arts; M.A. Oxford, 19th-21st century Okinawan history; editor of *The Journal and Official Correspondence of B. J. Bettelheim 1845-54* and of other Okinawan historical sources.
E-mail: apjokuma@yahoo.co.jp



Craig Willcox
Researcher in longevity science
Professor of international public health and welfare and gerontology. Ph.D., trained in medical anthropology, gerontology and public health sciences. Co-author of “The Okinawa Program” and “The Okinawa Diet Plan.”
E-mail: d.willcox@oku.ac.jp



Miguel Da Luz
Karate expert
Editor of multilingual magazine The Okinawan and monthly newsletter Okinawa Karate News. Resident of Okinawa since 1993. Karate and kobudo guide, interpreter and translator.
E-mail: contact@okinawamedia.com



Masaaki Kimura
Underwater explorer
Marine geologist best known to the world for his exploration of underwater structures. Also specializing in eruption and earthquake prediction based on volcanology and seismology. Author of numerous books.
E-mail: kimura65@me.com



Terunobu Tamamori
Tourism studies lecturer
Okinawa Christian Jr. College; able to provide statistical and descriptive profiles of Okinawa tourism/related topics in Japanese and digestible English. Editor of a bilingual book, “Okinawa Tour Guide.”
E-mail: t2tama@yahoo.co.jp



Paul Lorimer
Ceramic artist
New Zealand-born ceramic artist known for his awamori flasks and shisa; knowledgeable about awamori. First-prize winner at Okiten, a prestigious art competition in Okinawa. Has put on personal exhibitions nation-wide.
E-mail: okipot@opal.ocn.ne.jp



Katherine Muzik
Environmentalist
Ph.D., marine biologist, environmentalist and author of children's books about nature. Currently designing an Eco-Learning Center in Okinawa, hoping to help remind people about the important connections between land and sea.
E-mail: kmuzik@gmail.com

Okinawa's must-see annual events

Festivals

Spring



Whale Watching

Ranging from half to a full day, whale watching tours leave Naha to observe humpback whales who migrate to the Kerama Islands to mate (January-March).

Cherry Blossom Festival

The brilliant pink of Japan's earliest cherry blossoms fill wide expanses, to the accompaniment of myriad events. The festivals in Nago and at Mt. Yae in Motobu are popular.

Summer



Haarii

Celebration to pray for a good catch and safety on the seas. Fishermen race in dugouts called sabani in events held at many ports island-wide, including Naha (May) and Itoman (June).

All-Okinawa Eisa Festival

An August event featuring eisa, an Okinawan folkdance by young people to entertain the spirits of the ancestors. Groups from all around the island perform in this three-day event.

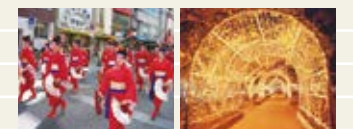
Autumn



Naha Great Tug-of-War

A tug-of-war is traditionally held to pray for a good harvest and catch, generally in September. Among the many that take place on the island, this is the biggest, featuring a gigantic rope (186m × 1.56m) boasting a Guinness World Record. Open to all; attracts a few hundred thousand participants and spectators.

Winter



Ryukyu Kingdom Festival

Taking place around the Shurijo Castle area along with numerous related events, its highlight is a parade that re-enacts a Ryukyu dynasty procession. (Oct.-Nov.)

Itoman Peaceful Illumination Festival

Held in Itoman, where the Battle of Okinawa saw its end, this event (Dec.-Jan.) embodies Okinawans' prayers for peace, with 1.3 million lights to represent the number of Okinawans on the island.

Participatory athletic events



Numerous sports events are held in Okinawa throughout the year: the Naha Marathon, one of the biggest races in Japan (December); the Tour de Okinawa, an international bicycle race where top athletes from around the world gather and ride through the island (November); and triathlons including the Ishigaki Triathlon World Cup and the All Japan Triathlon on Miyako Island (both April). The athletes also have the opportunity to be in close contact with Okinawa's natural beauty, a big part of the events' appeal.

Experience karate:

The Okinawa Traditional Karatedo Kobudo International Studying Center, housed in a Ryukyuan-style building with a red tile roof, provides both domestic and international practitioners the opportunity and facilities to undergo training in karate. The center seeks to restore the art of Okinawan karate to its original greatness

Recommended activities

Suggestions designed to meet the specific interests of individual visitors

Resort hotels with white sand beaches and a brilliant azure ocean aren't the only charm of this southern Japanese island. Okinawa is also known for its rich culture, developed through a history of active interaction with other Asian nations, and for its warmhearted people. Introduced here are suggested activities for varying interests, intended to help visitors make the most efficient use of their time on the island.



Travel Times

	from Naha	via Expwy	from Onna	via Expwy
A	55 min. (30 km)	50 min.	25 min. (13 km)	
B	25 min. (14 km)		90 min. (50 km)	55 min.
C	50 min. (30 km)	55 min.	40 min. (22 km)	
D	7 min. (4 km)		80 min. (43 km)	40 min.
E	80 min. (42 km)	45 min.	7 min. (4 km)	
F	40 min. (23 km)	35 min.	45 min. (25 km)	35 min.
G	9 min. (6 km)		70 min. (40 km)	40 min.
H	10 min. (7 km)		70 min. (43 km)	40 min.
I	25 min. (11 km)		90 min. (55 km)	65 min.
J	60 min. (37 km)	40 min.	18 min. (11 km)	
K	180 min. (87 km)	110 min.	110 min. (50 km)	
L	180 min. (90 km)	120 min.	90 min. (45 km)	
M	180 min. (90 km)	120 min.	90 min. (45 km)	
N	190 min. (97 km)	140 min.	120 min. (54 km)	
O	9 min. (5 km)		70 min. (40 km)	50 min.
P	6 min. (4 km)		75 min. (42 km)	45 min.
Q	10 min. (7 km)		65 min. (37 km)	40 min.



Okinawan Arts and Crafts

Workshops for traditional arts and crafts, including Ryukyu glass, textiles and ceramics, are popular among tourists at numerous locations island-wide. In order to participate in a variety of workshops in a limited period of time, a visit to a theme park is recommended: Okinawa World, known for its limestone cave tour and Habu Park; Ryukyu Mura, featuring the re-creation of an old castle town from the Ryukyu era and an old-fashioned sugarcane press powered by water buffalo; and Murasaki Mura, offering a wide variety of arts and crafts workshops for visitors. The dyeing of textiles using pieces of coral is a popular activity at Shuri Ryusen located in Naha's Shuri district.

- A. Ryukyu Mura: <http://www.ryukyumura.co.jp/>
- B. Okinawa World: <http://www.gyokusendo.co.jp/>
- C. Murasaki Mura: <http://www.murasakimura.com/>
- D. Ryusen: <http://www.shuri-ryusen.com/main.html>



Fishing & Cruises

From brilliantly colored coral reef fish such as parrotfish to famous big-game fish like marlin, subtropical island Okinawa is a fishermen's paradise, with the large variety of catch it offers. Available are numerous types of fishing, including surf, boat, lure, game and the ever-popular deep-sea fishing, which takes you about one-and-a-half hours off the coast, where you can spend the rest of the day angling. Charter boats with English-speaking crew can be found here, leaving from the port of Naha in the south (G), Onna in the west (E) and Awase on the east coast of the island (F). In addition to fishing and cruise tours, most resort hotels organize various other marine activities as well.

- I OkiDiving: www.okidiving.com/ (fishing)



Awamori Distilleries

Awamori, the oldest distilled liquor in Japan, is made with koji rice, a mixture of rice and koji mold, to which yeast and water are added for fermentation before distilling: The basic method hasn't changed in 500 years. Distillery tours and awamori sampling are offered at some of the 47 distilleries situated in Okinawa.

- H. Zuisen Distillery Co., Ltd.: <http://www.zuisen.co.jp>
- Kumejima's Kumesen: <http://www.k-kumesen.co.jp>
- I. Higa Distillery: <http://www.masahiro.co.jp>
- Kikunotsuyu Shuzo Co., Ltd.: <http://www.kikunotsuyu.co.jp>
- J. Kamimura Shuzo Co., Ltd.: <http://www.kamimura-shuzo.co.jp>



Longevity Culture

The secret of longevity island Okinawa is said to be its healthy diet, with high consumption of the soy protein found in local tofu, or shima tofu, and vitamin-rich pork, as well as a variety of nutritious vegetables and sea vegetables. The laid-back lifestyle of the people is also considered to be a key to long life. Located in Okinawa's nature-rich northern region, Ogimi Village is renowned for being the longest-lived community on island and is home to healthy-fare restaurant Emi no Mise, which

features traditional Okinawan dishes under the "locally-grown, locally-consumed" concept. Local delicacies are also available for purchase at Michinoeki, the sundries stores found in every municipality in northern Okinawa, and at the Makishi Public Market in Naha City.

- K. Emi no Mise: <http://eminomise.com/>



Eco Activities

Blessed with the gift of subtropical nature, Okinawa offers great eco tour opportunities. The main island has rich forests located in the north inhabited by a variety of protected species of flora and fauna. Popular places for eco tours there include Gesashigawa in Higashi Village (M) and Hiji Falls (N), with walking trails stretching along the stream, as well as mangrove forests ideal for

kayaking. Iriomote Island, designated a national park and 90 percent of which is covered by unspoiled forests, offers a number of canoeing locations, among them Urauchi River, Nakama River and Pinaisara Falls, where rarely seen wild animals can be observed.

- L. Yanbaru Nature School: <http://www.gesashi.com/>



Okinawan Music and Dance

Identified by the strains of the sanshin that accompany the island's songs and dances, traditional Okinawan music still is considered an integral part of local events and gatherings today. Contemporary Okinawan music, embodying various influences including the jazz and rock brought with American culture after World War II, is a unique blend of local tradition and foreign

culture. While the National Theater Okinawa has a more classical Ryukyuan repertoire, including kumiodori, a form of narrative traditional Ryukyuan dance, numerous bars and restaurants offer live Okinawan music along with delectable local cuisine.

- O. National Theater Okinawa: <http://www.nt-okinawa.or.jp/en/index.html>



Museums

The Okinawa Prefectural Museum & Art Museum offers a range of Okinawa-related exhibitions showcasing its unique nature, history and culture. The Urasoe Art Museum features an extensive collection of Ryukyuan lacquer ware from the 16th century to the present day.

- P. Okinawa Prefectural Museum & Art Museum: <http://www.museums.pref.okinawa.jp/english/index.html>
- Q. The Urasoe Art Museum: <http://www.city.urasoe.lg.jp/archive/8761234/art/englishver/english.html>

Find much more tourist information at www.visitokinawa.jp

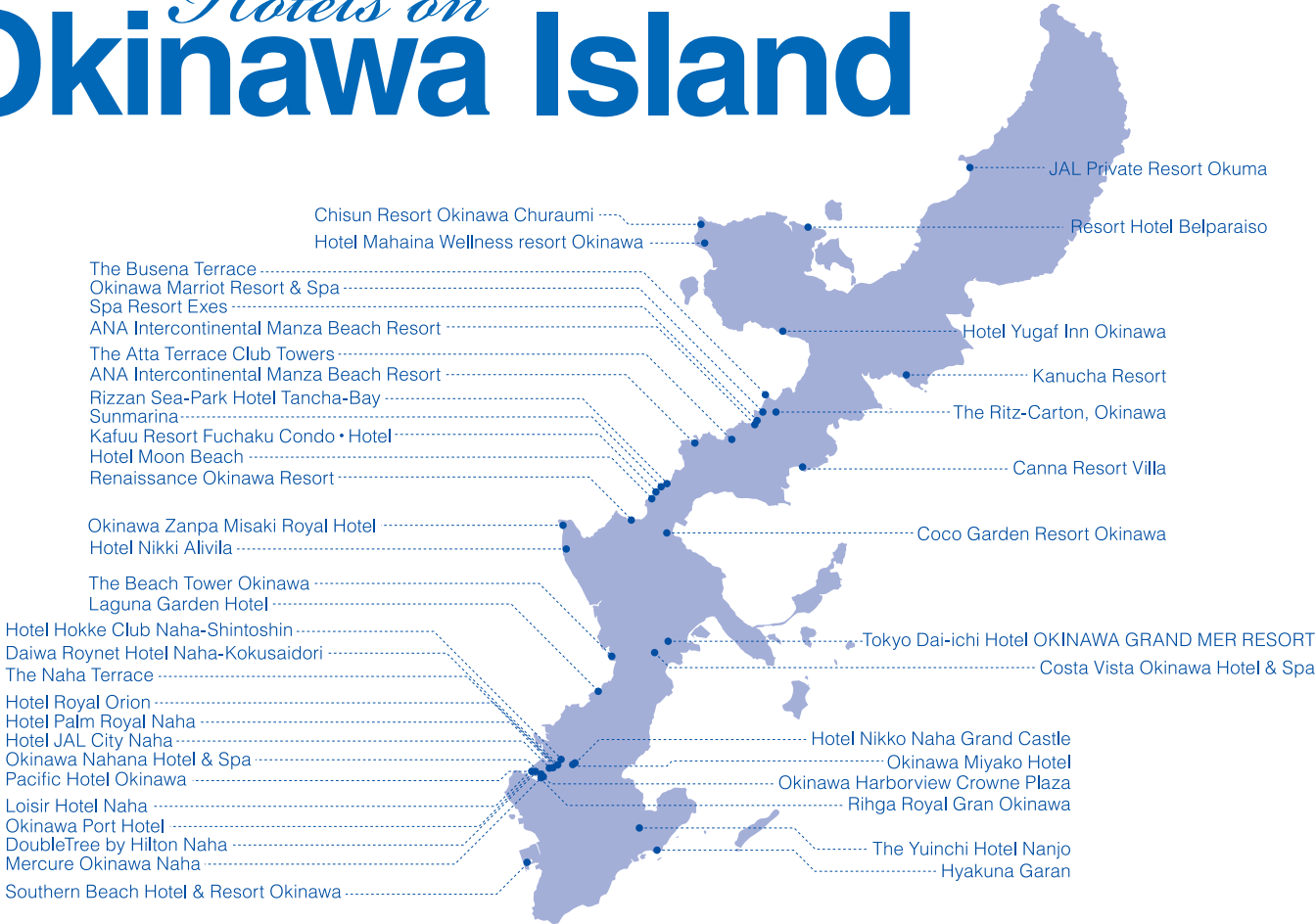
Golfing in an island breeze

Golf can be enjoyed year round in Okinawa, with a variety of courses located island-wide, most of which command a spectacular view of the ocean, including those that also offer the pleasure of playing in a tropical forest surrounding. Several resort facilities are equipped with golf courses, where your time after the game is complimented by the comfort of luxury accommodation services.

For more information: <http://www.okinawastory.jp/en/what/sports.html>



Hotels on Okinawa Island



ANA Intercontinental Manza Beach Resort

2260 Seragaki, Onna Village 904-0493 / TEL: +81(98)966-1211
FAX: +81(98)966-2210 / URL: <http://www.anaintercontinental-manza.jp>

Located across from scenic Manzamo, the former Manza Beach Hotel & Resort reopened as the ANA InterContinental Manza Beach Resort in April 2009, one of the InterContinental Hotels Group's most

prestigious properties, offering a luxurious lobby and upgraded guest rooms all smoke free. Free Internet access with a LAN connection is available in every guest room.



Guest rooms (by type) [Total number of rooms: 399]

- Premium Deluxe Corner Terrace *max. 4 people [1 room]
- Deluxe Corner Suite *max. 3 people [2 rooms]
- Corner Suite *max. 3 people [3 rooms]
- Premium Corner Terrace *max. 2 people [2 rooms]

- Corner Terrace *max. 3 people [11 rooms]
- Premium Floor Standard *max. 2 people [40 rooms]
- High Floor Twin *max. 4 people [94 rooms]
- Superior Twin *max. 4 people [229 rooms]

- Universal Room *max. 2 people [1 room]
- Partial Ocean View Room *max. 4 people [17 rooms]

Restaurant / Bar

- ☒ Japanese ☒ Chinese ☐ Italian ☒ BBQ
- ☒ Western ☐ French ☒ Bar ☒ Lounge
- ☒ Other (Buffet / Okinawan)

Other

- ☒ Internet access in room ☐ Internet section ☐ Fitness center
- ☐ Spa ☒ Esthetic salon ☐ Indoor pool ☒ Outdoor pool
- ☐ One king or two double beds ☐ Wi-Fi in guest rooms

Swimming Season
Beach: year-round
Outdoor Pool: Mar.-Nov.

Canna Resort Villa

397-1 Kanna, Ginoza Village 904-1304 / TEL: +81(98)968-7011 / FAX: +81(98)968-7306
URL: <http://www.cannaresort.co.jp>

The resort's approximately three acres of nature-rich land on the northeast coast of the main island has 30 villas offering guests a hideaway experience. Subtropical flowers bloom in profusion in the garden, and a little chapel sits adjacent to the

oceanview pool, making this a private, nature-filled oasis. The hotel is nestled in the midst of pristine nature but is also close to a variety of eco-tours in the surrounding northern wilderness.



Guest rooms (by type) [Total number of rooms: 30]

- Double [14 rooms]
- Twin [15 rooms]
- Ocean Triple [1 room]

Restaurant / Bar

- ☒ Japanese ☐ Chinese ☐ Italian ☒ BBQ
- ☒ Western ☐ French ☒ Bar ☐ Lounge
- ☐ Other ()

Other

- ☒ Internet access in room ☐ Business section ☒ Fitness center
- ☐ Spa ☐ Esthetic salon ☐ Indoor pool ☒ Outdoor pool
- ☒ One king or two double beds ☒ Wi-Fi in guest rooms

Swimming Season
Outdoor Pool: Apr.-Oct.

Chisun Resort Okinawa Churaumi

938 Ishikawa, Motobu Town 905-0206 / TEL: +81(980)48-3631
FAX: +81(980)48-3639 / URL: <http://www.solarehotels.com/english/chisun>

This conveniently located hotel is merely a one-minute walk from Okinawa Churaumi Aquarium and within easy reach of the stunning Emerald Beach and many other facilities belonging to Ocean Expo Park. How about a ride along Bise's picturesque,

tree-lined Fukugi path with a water buffalo? Or a trip to the nearby Nakijin Castle ruins? An abundance of attractions await, and the Chisun Resort is close to them all. Water sports at the nearby Sesoko and Minna islands are a must.



Guest rooms (by type) [Total number of rooms: 94]

- Twin Room [92 rooms]
- Family Room [2 rooms]

Restaurant / Bar

- ☒ Japanese ☐ Chinese ☐ Italian ☒ BBQ
- ☒ Western ☐ French ☐ Bar ☐ Lounge
- ☐ Other ()

Other

- ☐ Internet access in room ☐ Business section ☐ Fitness center
- ☐ Spa ☐ Esthetic salon ☐ Indoor pool ☒ Outdoor pool
- ☐ One king or two double beds ☒ Wi-Fi in guest rooms

Swimming Season
Beach: Apr.-Oct.
Outdoor Pool: Apr.-Oct.

Hotel Mahaina Wellness resort Okinawa

1456Yamakawa, Motobu Town 905-0205 / TEL: +81(980)51-7700
FAX: +81(980)51-7777 / URL: <http://www.mahaina.co.jp/international/english/>

Hotel Mahaina Wellness Resort Okinawa is located on the beautiful coast of the Motobu Peninsula, the heart of tourism in northern Okinawa. In front of the hotel is Ocean Expo Park, home of the nationally renowned Churaumi Aquarium and Tropical Dream

Center -- a large-scale botanical garden. The hotel features large public baths utilizing mineral-rich groundwater. All of the spacious guests rooms have an ocean view.



Guest rooms (by type) [Total number of rooms: 250]

- Standard Twin [152 rooms]
- Deluxe Twin [78 rooms]
- Junior Suite [12 rooms]
- Semi Suite (Maisonnette) [7 rooms]
- Mahaina Suite [1 room]

Restaurant / Bar

- ☐ Japanese ☐ Chinese ☐ Italian ☐ BBQ
- ☐ Western ☐ French ☐ Bar ☒ Lounge
- ☒ Other (International / Buffet)

Other

- ☒ Internet access in room ☒ Internet section ☐ Fitness center
- ☐ Spa ☒ Esthetic salon ☒ Indoor pool ☒ Outdoor pool
- ☐ One king or two double beds ☐ Wi-Fi in guest rooms

Swimming Season
Outdoor Pool: Apr.-Oct.

Hotel Moon Beach

1203 Maeganeku, Onna Village 904-0414
TEL: +81(98)965-1020 / FAX: +81(98)965-0555 / URL: <http://www.moonbeach.co.jp> (Japanese)

Previously a sanitarium for US military personnel, Hotel Moon Beach is proud of its history as one of the pioneers of resort hotels in Okinawa. It is located in the heart of Okinawa's resort mecca on its west coast.

Guests can enjoy marine activities on its half moon-shaped natural beach. An exotic green atrium, flowers blooming on its grounds and a year-round indoor swimming pool provide a tropical atmosphere.



Guest rooms (by type) [Total number of rooms: 278]

- Suite [9 rooms]
- Hollywood Twin [1 room]
- Deluxe Twin (type L) [42 rooms]
- Deluxe Twin (type E) [26 rooms]
- Deluxe Twin (type M) [60 rooms]
- Deluxe Twin (type S) [49 rooms]
- Standard Twin [91 rooms]

Restaurant / Bar

- ☒ Japanese ☒ Chinese ☒ Italian ☒ BBQ
- ☒ Western ☒ French ☒ Bar ☒ Lounge
- ☒ Other (Buffet)

Other

- ☒ Internet access in room ☐ Business section ☒ Fitness center
- ☒ Spa ☐ Esthetic salon ☒ Indoor pool ☐ Outdoor pool
- ☐ One king or two double beds ☐ Wi-Fi in guest rooms

Swimming Season
Beach: Apr.-Oct.

Hotel Yufag Inn Okinawa

453-1 Miyazato, Nago City 905-0011
TEL: +81(980)53-0031 / FAX: +81(980)53-7193 / <http://www.yufag.com/international/english>

Hotel Yufag Inn Okinawa is a health-oriented urban resort conveniently located in the heart of Nago City, making it a great base of operations from which to foray around. Boasting healthy cuisine making the

most of fresh, tasty, seasonal, local produce, they hope to encourage health-promoting eating habits in their guests. They boosted their facilities in 2009 with the addition of a new building.



Guest rooms (by type) [Total number of rooms: 125]

- Single [44 rooms]
- Twin [12 rooms]
- Deluxe [8 rooms]
- Standard Twin [17 rooms]
- Executive Twin [35 rooms]
- Universal Twim [3 rooms]
- Executive Ocean Room [6 rooms]

Restaurant / Bar

- ☐ Japanese ☐ Chinese ☐ Italian ☐ BBQ
- ☐ Western ☐ French ☐ Bar ☒ Lounge
- ☒ Other (International Buffet)

Other

- ☒ Internet access in room ☒ Internet section ☐ Fitness center
- ☐ Spa ☐ Esthetic salon ☐ Indoor pool ☐ Outdoor pool
- ☐ One king or two double beds ☐ Wi-Fi in guest rooms

JAL Private Resort Okuma

913 Okuma, Kunigami Village 905-1412 / TEL: +81(980)41-2222
FAX: +81(980)41-2234 / URL: <http://www.jalhotels.com/domestic/okinawa/okuma/index.html>

The JAL Private Resort Okuma is located in northern Okinawa, where subtropical nature still remains abundant. Modern Asian style cottages are scattered around the beautiful lawn area. In addition

to a pure white-sand beach and beautiful coral reefs, the JAL Private Resort Okuma also has a beachside pool and rich marine and field activity programs for a whole year of sports fun in an atmosphere of paradise.



Guest rooms (by type) [Total number of rooms: 184]

- | | |
|----------------------------|----------------------------------|
| ■ Okuma Suite [2 rooms] | ■ Main Cottage Deluxe [44 rooms] |
| ■ Junior Suite [2 rooms] | ■ Main Cottage [48 rooms] |
| ■ Grand Cottage [16 rooms] | ■ Palm Cottage [36 rooms] |
| ■ Garden Villa [36 rooms] | |

Restaurant / Bar

- | | | | |
|---|--|---|---|
| <input checked="" type="checkbox"/> Japanese | <input type="checkbox"/> Chinese | <input checked="" type="checkbox"/> Italian | <input checked="" type="checkbox"/> BBQ |
| <input checked="" type="checkbox"/> Western | <input checked="" type="checkbox"/> French | <input checked="" type="checkbox"/> Bar | <input type="checkbox"/> Lounge |
| <input checked="" type="checkbox"/> Other (Teppanyaki / Japanese-style pub) | | | |

Other

- | | | | |
|--|---|---|--|
| <input type="checkbox"/> Internet access in room | <input type="checkbox"/> Business section | <input type="checkbox"/> Fitness center | Swimming Season |
| <input checked="" type="checkbox"/> Spa | <input type="checkbox"/> Esthetic salon | <input type="checkbox"/> Indoor pool | <input checked="" type="checkbox"/> Outdoor pool |
| <input type="checkbox"/> One king or two double beds | | | <input type="checkbox"/> Wi-Fi in guest rooms |
| | | | Beach: year-round |
| | | | Outdoor Pool: year-round |

Kafuu Resort Fuchaku Condo・Hotel

246-1 Fuchaku Shirifukuchihara, Onna Village 904-0413
TEL: +81(98)964-7000 / FAX: +81(98)964-7700 / <http://www.kafuu-okinawa.jp/en/>

Kafuu Resort Fuchaku Condo・Hotel is located in the most beautiful resort areas of Okinawa. It has the combination of a world-class luxury hotel with the convenience of condominium living offering 24 hour internet, gym, support items and laundry service

along with bilingual staffs that will make you feel at home. Every room is equipped with a kitchen and amazing panoramic view of the East China Sea that will take your breath away.



Guest rooms (by type) [Total number of rooms: 249]

- | | | |
|-----------------------------|---------------------------------|-------------------------------|
| ■ Superior Twin [6 rooms] | ■ Superior Luxury Twin [5 room] | ■ Celebrity suite [1 room] |
| ■ Deluxe Twin [16 room] | ■ Junior Suite Quad [2 room] | ■ Presidential Suite [1 room] |
| ■ Luxury Quad [65 room] | ■ Honeymoon suite [1 room] | ■ Condo style [128 room] |
| ■ Executive Quad [23 rooms] | ■ Luxury suite [1 room] | |

Restaurant / Bar

- | | | | |
|--|----------------------------------|---|---------------------------------|
| <input checked="" type="checkbox"/> Japanese | <input type="checkbox"/> Chinese | <input checked="" type="checkbox"/> Italian | <input type="checkbox"/> BBQ |
| <input type="checkbox"/> Western | <input type="checkbox"/> French | <input checked="" type="checkbox"/> Bar | <input type="checkbox"/> Lounge |
| <input checked="" type="checkbox"/> Other (Deli) | | | |

Other

- | | | | |
|---|--|--|--|
| <input checked="" type="checkbox"/> Internet access in room | <input checked="" type="checkbox"/> Business section | <input checked="" type="checkbox"/> Fitness center | Swimming Season |
| <input checked="" type="checkbox"/> Spa | <input type="checkbox"/> Esthetic salon | <input type="checkbox"/> Indoor pool | <input checked="" type="checkbox"/> Outdoor pool |
| <input checked="" type="checkbox"/> One king or two double beds | | | <input type="checkbox"/> Wi-Fi in guest rooms |
| | | | Outdoor Pool: Apr.-Oct. |

Kanucha Resort

156-2 Abu, Nago City 905-2263
TEL: +81(980)55-8880 / FAX: +81(980)55-8693 / URL: <http://http://www.kanucha.jp/en/>

Kanucha Resort is located on the Pacific Ocean side of northern Okinawa Island, famous as a natural habitat of the dugong. With the theme of "a paradise on earth," the hotel is spread over a vast 2,640 square

kilometers and has a golf course, condominiums, pool zone, private beach and various relaxation facilities surrounded by a thick blanket of primeval subtropical forests.



Guest rooms (by type) [Total number of rooms: 315]

- | | | | | |
|---|---|------------------------------|------------------------------------|----------------------------|
| ■ Royal Suite [2 rooms] | ■ Avian Beachside Cottage (1F-B) [1 room] | ■ Magnolia (5F) [1 room] | ■ Deluxe Family [14 rooms] | ■ Deluxe Twin [28 rooms] |
| ■ Avian Beachside Cottage (2F-B) [1 room] | ■ Avian Beachside Cottage (1F-A) [1 room] | ■ Kanucha Suite [12 rooms] | ■ Kanucha Superior Twin [20 rooms] | ■ Gallery Twin [36 rooms] |
| ■ Avian Beachside Cottage (2F-A) [1 room] | ■ Palm Towers Executive Twin (7-8F) [8 rooms] | ■ Jasmine [4 rooms] | ■ Orchid [70 rooms] | ■ Standard Twin [20 rooms] |
| ■ New Cottage [2 rooms] | ■ Palm Towers (1-6F) [22 rooms] | ■ Magnolia (1-4F) [14 rooms] | ■ Azalea [57 rooms] | |

Restaurant / Bar

- | | | | |
|---|---|---|---|
| <input checked="" type="checkbox"/> Japanese | <input checked="" type="checkbox"/> Chinese | <input checked="" type="checkbox"/> Italian | <input checked="" type="checkbox"/> BBQ |
| <input checked="" type="checkbox"/> Western | <input checked="" type="checkbox"/> French | <input checked="" type="checkbox"/> Bar | <input type="checkbox"/> Lounge |
| <input checked="" type="checkbox"/> Other (Buffet / Okinawan) | | | |

Other

- | | | | |
|--|--|--|--|
| <input type="checkbox"/> Internet access in room | <input type="checkbox"/> Business section | <input checked="" type="checkbox"/> Fitness center | Swimming Season |
| <input checked="" type="checkbox"/> Spa | <input checked="" type="checkbox"/> Esthetic salon | <input checked="" type="checkbox"/> Indoor pool | <input checked="" type="checkbox"/> Outdoor pool |
| <input type="checkbox"/> One king or two double beds | | | <input type="checkbox"/> Wi-Fi in guest rooms |
| | | | Beach: Apr.-Oct. |
| | | | Outdoor Pool: Apr.-Oct. |

Okinawa Kariyushi Beach Resort Ocean Spa

2591-1 Yashibaru Nakama, Onna Village 904-0401 / TEL: +81(98)967-8731
FAX: +81(98)967-8730 / URL: <http://http://www.kariyushi.co.jp/beach/english/index.html>

Situated in the resort district on the west coast, this hotel has two main buildings on its vast premises: the Wing Tower, with spacious guest rooms ideal for families, and the Ocean Tower, commanding a tranquil view of the East China Sea. Guests can enjoy

not only the island's subtropical nature with the hotel's marine and sports activities but also outdoor baths infused with aloe vera and an open-air bath with an ocean view.



Guest rooms (by type) [Total number of rooms: 515]

- | | |
|------------------------------------|--------------------------------------|
| ■ Wing Tower Twin [19 rooms] | ■ Wing Tower Corner Double [4 rooms] |
| ■ Wing Tower Fourth [148 rooms] | ■ Ocean Tower Twin [200 rooms] |
| ■ Japanese-style Room [20 rooms] | ■ Ocean Tower Triple [70 rooms] |
| ■ Wing Tower Corner Twin [5 rooms] | ■ Ocean Tower Suite [4 rooms] |

Restaurant / Bar

- | | | | |
|---|---|---|--|
| <input checked="" type="checkbox"/> Japanese | <input checked="" type="checkbox"/> Chinese | <input checked="" type="checkbox"/> Italian | <input checked="" type="checkbox"/> BBQ |
| <input checked="" type="checkbox"/> Western | <input type="checkbox"/> French | <input checked="" type="checkbox"/> Bar | <input checked="" type="checkbox"/> Lounge |
| <input checked="" type="checkbox"/> Other (Okinawan / Yakiniku) | | | |

Other

- | | | | |
|---|--|--|--|
| <input type="checkbox"/> Internet access in room | <input checked="" type="checkbox"/> Business section | <input checked="" type="checkbox"/> Fitness center | Swimming Season |
| <input checked="" type="checkbox"/> Spa | <input checked="" type="checkbox"/> Esthetic salon | <input checked="" type="checkbox"/> Indoor pool | <input checked="" type="checkbox"/> Outdoor pool |
| <input checked="" type="checkbox"/> One king or two double beds | | | <input type="checkbox"/> Wi-Fi in guest rooms |
| | | | Beach: Apr.-Oct. |
| | | | Outdoor Pool: Apr.-Oct. |

Okinawa Marriot Resort & Spa

1490-1 Kise, Nago City 905-0026
TEL: +81(980)51-1000 / FAX: +81(980)51-1001 / URL: <http://www.marriott.com>

Marriott, the number-one brand in the world of hotels, debuted in Okinawa in 2005. The hotel is located on the crest of a hill in Nago, the northernmost city in Okinawa, offering a view of the beautiful East China Sea and a subtropical forest. The

hotel provides its guests with the finest in bath amenities and linens, with relaxation facilities, such as an exclusive spa and esthetic salon that relax both mind and body, earning top reviews from guests.



Guest rooms (by type) [Total number of rooms: 361]

- | | |
|---------------------------|--|
| ■ Superior [140 rooms] | ■ Family rooms (Japanese & Western style) [36 rooms] |
| ■ High floor [112 rooms] | ■ Crown Suite [10 rooms] |
| ■ Executive [56 rooms] | ■ Royal Suite [1 room] |
| ■ Okinawa Suite [6 rooms] | |

Restaurant / Bar

- | | | | |
|---|---|---|---|
| <input checked="" type="checkbox"/> Japanese | <input checked="" type="checkbox"/> Chinese | <input type="checkbox"/> Italian | <input checked="" type="checkbox"/> BBQ |
| <input checked="" type="checkbox"/> Western | <input type="checkbox"/> French | <input checked="" type="checkbox"/> Bar | <input type="checkbox"/> Lounge |
| <input checked="" type="checkbox"/> Other (Korean Barbecue) | | | |

Other

- | | | | |
|---|--|--|--|
| <input checked="" type="checkbox"/> Internet access in room | <input checked="" type="checkbox"/> Business section | <input checked="" type="checkbox"/> Fitness center | Swimming Season |
| <input checked="" type="checkbox"/> Spa | <input checked="" type="checkbox"/> Esthetic salon | <input checked="" type="checkbox"/> Indoor pool | <input checked="" type="checkbox"/> Outdoor pool |
| <input type="checkbox"/> One king or two double beds | | | <input type="checkbox"/> Wi-Fi in guest rooms |
| | | | Beach: Apr.-Oct. |
| | | | Outdoor Pool: year-round |

Renaissance Okinawa Resort

3425-2 Yamada, Onna Village 904-0416
TEL: +81(98)965-0707 / FAX: +81(98)965-5011 / URL: <http://www.renaissance-okinawa.com> (Japanese)

Located in Onna Village, Okinawa's "resort central," this hotel has all-ocean-view guest rooms, equipped with balconies. Its popular facilities include a unique variety of restaurants and bars and a thalassotherapy salon using sea mud, seaweed and

seawater. A program in which participants can swim with dolphins is also a popular choice among the various marine activities organized by the Renaissance Resort.



Guest rooms (by type) [Total number of rooms: 377]

- | | | |
|-------------------------------|---------------------------------------|---|
| ■ Renaissance Suite [1 room] | ■ Corner Double [17 rooms] | ■ Accessible Connecting Room [1 room] |
| ■ Corner Suite [1 room] | ■ Flippers Connecting Room [14 rooms] | ■ Ryukyu Suite (Japanese-style) [6 rooms] |
| ■ Junior Suite [7 rooms] | ■ Deluxe Twin [78 rooms] | ■ Japanese Suite [7 rooms] |
| ■ Renaissance Twin [28 rooms] | ■ Superior Twin [210 rooms] | ■ Japanese Regular [7 rooms] |

Restaurant / Bar

- | | | | |
|---|----------------------------------|---|--|
| <input checked="" type="checkbox"/> Japanese | <input type="checkbox"/> Chinese | <input checked="" type="checkbox"/> Italian | <input checked="" type="checkbox"/> BBQ |
| <input checked="" type="checkbox"/> Western | <input type="checkbox"/> French | <input checked="" type="checkbox"/> Bar | <input checked="" type="checkbox"/> Lounge |
| <input checked="" type="checkbox"/> Other (Asian) | | | |

Other

- | | | | |
|---|--|--|--|
| <input checked="" type="checkbox"/> Internet access in room | <input checked="" type="checkbox"/> Internet Section | <input checked="" type="checkbox"/> Fitness center | Swimming Season |
| <input type="checkbox"/> Spa | <input checked="" type="checkbox"/> Esthetic salon | <input checked="" type="checkbox"/> Indoor pool | <input checked="" type="checkbox"/> Outdoor pool |
| <input type="checkbox"/> One king or two double beds | | | <input checked="" type="checkbox"/> Wi-Fi in guest rooms |
| | | | Beach: year-round |
| | | | Outdoor Pool: year-round |

Resort Hotel Belparaiso

1069 Aza Unten Nakijin Village 905-0403
TEL: +81(980)56-2767 / FAX: +81(980)56-2777 / URL: <http://belparaiso.com/> (Japanese)

Resort Hotel Belparaiso, located in Nakijin Village, northern Okinawa, sits on a natural beach that stretches for half a mile. All rooms have great ocean views. The rooms measure over 45 m² and are equipped separate bathrooms and toilets. The hotel offers easy

access to World Heritage site the Nakijin Castle Ruins as well as the Churaumi Aquarium and is a perfect base for sightseeing in the northern part of Okinawa.



Guest rooms (by type) [Total number of rooms: 84]

- | |
|------------------------------|
| ■ Suite room [4 rooms] |
| ■ Ocean view room [60 rooms] |
| ■ Private cottage [20 rooms] |

Restaurant / Bar

- | | | | |
|--|--|---|---|
| <input checked="" type="checkbox"/> Japanese | <input type="checkbox"/> Chinese | <input type="checkbox"/> Italian | <input checked="" type="checkbox"/> BBQ |
| <input checked="" type="checkbox"/> Western | <input checked="" type="checkbox"/> French | <input checked="" type="checkbox"/> Bar | <input type="checkbox"/> Lounge |
| <input type="checkbox"/> Other (Buffet) | | | |

Other

- | | | | |
|---|---|---|--|
| <input checked="" type="checkbox"/> Internet access in room | <input type="checkbox"/> Business section | <input type="checkbox"/> Fitness center | Swimming Season |
| <input type="checkbox"/> Spa | <input type="checkbox"/> Esthetic salon | <input type="checkbox"/> Indoor pool | <input checked="" type="checkbox"/> Outdoor pool |
| <input type="checkbox"/> One king or two double beds | | | <input type="checkbox"/> Wi-Fi in guest rooms |
| | | | Beach: Apr.-Sep. |
| | | | Outdoor Pool: Apr.-Sep. |

Rizzan Sea-Park Hotel Tancha-Bay

1496 Tancha, Onna Village 904-0496
TEL: +81(98)964-6611 / FAX: +81(98)964-6660 / URL: <http://www.rizzan.co.jp/english/>

The Rizzan Sea-Park Hotel Tancha-Bay, with a natural beach that was named one of Japan's most beautiful by the Ministry of Environment, is located in the middle of Okinawa Island's west coast. Guests

can enjoy a view of the East China Sea from ocean view rooms, all restaurants and the lounge. Many marine activities are organized by the hotel. The large public bath is popular among guests.



Guest rooms (by type) [Total number of rooms: 721]

- | | |
|---------------------------|----------------------|
| ■ Royal Suite [1 room] | ■ Deluxe [200 rooms] |
| ■ Maple Suite [1 room] | ■ Corner [124 rooms] |
| ■ Japanese Suite [1 room] | |
| ■ Standard [289 rooms] | |

Restaurant / Bar

- | | | | |
|--|---|---|--|
| <input checked="" type="checkbox"/> Japanese | <input checked="" type="checkbox"/> Chinese | <input type="checkbox"/> Italian | <input checked="" type="checkbox"/> BBQ |
| <input checked="" type="checkbox"/> Western | <input type="checkbox"/> French | <input checked="" type="checkbox"/> Bar | <input checked="" type="checkbox"/> Lounge |
| <input type="checkbox"/> Other () | | | |

Other

- | | | | |
|---|--|---|--|
| <input checked="" type="checkbox"/> Internet access in room | <input checked="" type="checkbox"/> Internet section | <input type="checkbox"/> Fitness center | Swimming Season |
| <input checked="" type="checkbox"/> Spa | <input checked="" type="checkbox"/> Esthetic salon | <input checked="" type="checkbox"/> Indoor pool | <input checked="" type="checkbox"/> Outdoor pool |
| <input type="checkbox"/> One king or two double beds | | | <input type="checkbox"/> Wi-Fi in guest rooms |
| | | | Beach: Apr.-Oct. |
| | | | Outdoor Pool: Apr.-Oct. |

Spa Resort Exes

2592-40 Nakama-Yashihara, Onna Village 904-0401
TEL: +81(98)967-7500 / FAX: +81(98)967-7501 / URL: http://www.exes-kariyushi.com/english/index.html

Surrounded by the natural beauty of Onna, a village on the island’s west coast renowned for its spectacular ocean views and lush woods, Spa Resort Exes welcomes guests into the realm of exclusive luxury, with the combined services of a spa and

esthetic salon featuring renowned international spa brand Terraké, available only at other top-class hotels around the world. The Royal Exes Room on the ninth floor is equipped with a swimming pool for individual use.



Guest rooms (by type) [Total number of rooms: 90]

- Superior [55 rooms]
- EXES [10 rooms]
- Universal Design [2 rooms]
- EXES Suite [2 rooms]
- Corner Suite [9 rooms]
- Royal EXES Suite [12 rooms]

Restaurant / Bar

- ☐ Japanese
- ☐ Chinese
- ☐ Italian
- ☐ BBQ
- ☐ Western
- ☒ French
- ☐ Bar
- ☐ Lounge
- ☒ Other (French restaurant includes the bar corner)

Other

- ☒ Internet access in room
- ☒ Business section
- ☒ Fitness center
- ☒ Spa
- ☒ Esthetic salon
- ☒ Indoor pool
- ☒ Outdoor pool
- ☒ One king or two double beds
- ☐ Wi-Fi in guest rooms

Swimming Season
Beach: early Apr.-Oct.
Outdoor Pool: early Apr.-Oct.

Sunmarina

66-1 Fuchaku, Onna Village 904-0494
TEL: +81(98)965-2222 / FAX: +81(98)965-5480 / URL: http://www.ishinhotels.com/sunmarina-hotel/en/index.html

The Sun Marina is a resort hotel on the west coast with all guest rooms overlooking the East China Sea. Throughout their stay guests are enveloped by an ocean atmosphere because of the seawater drawn into the hotel building and its

grounds for its pleasant effect. There is a marina at the beach for the exclusive use of hotel guests. The hotel’s spa offers various treatments such as a special stone therapy for the healing of your body.



Guest rooms (by type) [Total number of rooms: 200]

- Double [12 rooms]
- Corner Suite [2 rooms]
- Stand win [29 rooms]
- Royal Suite (Western-style Room) [1 room]
- Deluxe Twin [141 rooms]
- Royal Suite (Japanese/Western Mixed-style Room) [1 room]
- Junior Suite [14 rooms]

Restaurant / Bar

- ☒ Japanese
- ☐ Chinese
- ☐ Italian
- ☒ BBQ
- ☒ Western
- ☐ French
- ☐ Bar
- ☒ Lounge
- ☒ Other (Snack bar)

Other

- ☐ Internet access in room
- ☐ Business section
- ☐ Fitness center
- ☒ Spa
- ☒ Esthetic salon
- ☐ Indoor pool
- ☒ Outdoor pool
- ☐ One king or two double beds
- ☒ Wi-Fi in guest rooms (on 6F and above)

Swimming Season
Beach: year-round
Outdoor Pool: Mar.-Nov.

The Atta Terrace Club Towers

1079 Afuso, Onna Village 904-0402
TEL: +81(98)983-3333 / FAX: +81(98)983-3111 / URL: http://www.terrace.co.jp/en/clubtowers/

A resort located on a small hill in Onna Village on the island’s west coast, surrounded by deep woods and clear water reflecting the distinctive beauty of subtropical nature, The Atta Terrace Club Towers provides an exclusive retreat for its privileged

guests. An unprecedented level of sophistication in service and excellent hospitality begin with 24-hour butler service and facilities such as the Club Spa, as well as an outdoor pool that opens to the woods and the sea.



Guest rooms (by type) [Total number of rooms: 78]

- Club Deluxe [34 rooms]
- Club Luxury [38 rooms]
- Terrace Suite [2 rooms]
- Premier Garden [4 rooms]

Restaurant / Bar

- ☐ Japanese
- ☐ Chinese
- ☐ Italian
- ☐ BBQ
- ☒ Western
- ☐ French
- ☒ Bar
- ☐ Lounge
- ☒ Other (Teppanyaki)

Other

- ☒ Internet access in room
- ☐ Business section
- ☐ Fitness center
- ☒ Spa
- ☒ Esthetic salon
- ☐ Indoor pool
- ☒ Outdoor pool
- ☒ One king or two double beds
- ☐ Wi-Fi in guest rooms

Swimming Season
Outdoor Pool: Apr.-Nov.

The Busena Terrace

1808 Kise, Nago City 905-0026
TEL: +81(980)51-1333 / FAX: +81(980)51-1331 / URL: http://www.terrace.co.jp/en/busena/

Cape Busena, surrounded on three sides by the azure sea, is home to an elegant resort hotel. Situated at the northern tip of the west coast resort district, The Busena Terrace represents the best in Okinawan resort hotels. This spacious hotel is filled with the

blessings of nature, sunlight and the gentle breezes of Japan’s southern island. With 24-hour butler service, numerous restaurants and many marine activities together with a superb relaxation treatment, this resort is definitely stylish.



Guest rooms (by type) [Total number of rooms: 410]

- Deluxe Natural [196 rooms]
- Gazebo Terrace [8 rooms]
- Club Cottage / Superior Suite [3 rooms]
- Deluxe Elegant [168 rooms]
- Terrace Suite [2 rooms]
- Club Cottage / Deluxe Suite [3 rooms]
- Maisonette [14 rooms]
- Club Suite [2 rooms]
- Club Cottage / Luxurious Suite [11 rooms]
- Japanese-style Room Deluxe [1 room]
- Royal Suite [1 room]
- Club Cottage / Presidential Suite [1 room]

Restaurant / Bar

- ☒ Japanese
- ☒ Chinese
- ☒ Italian
- ☒ BBQ
- ☒ Western
- ☒ French
- ☒ Bar
- ☒ Lounge
- ☒ Other (Teppanyaki / Seafood market-style Restaurant / Snack bar / Karaoke)

Other

- ☒ Internet access in room
- ☒ Business section
- ☒ Fitness center
- ☒ Spa
- ☒ Esthetic salon
- ☒ Indoor pool
- ☒ Outdoor pool
- ☒ One king or two double beds
- ☐ Wi-Fi in guest rooms

Swimming Season
Beach: Apr.-Oct.
Outdoor Pool: Apr.-Oct.

The Ritz-Carton, Okinawa

1343-1 Kise, Nago City 905-0026 / TEL: +81(980)43-5555
FAX: +81(980)43-5550 / URL: http://www.ritzcarlton.com/en/okinawa

The Ritz-Carlton, Okinawa opened for business as a luxury resort with ocean views in May of 2012. The elegant main building is based on Ryukyu architecture and overlooks Nago Bay in a northern area of

Okinawa island. The resort features a world-class spa that offers a full range of treatments. Private spa suites set in the midst of natural surroundings are recommended for couples seeking a unique experience.



Guest rooms (by type) [Total number of rooms: 97]

- Deluxe Twin [76 rooms]
- Cabana [8 rooms]
- Deluxe King [2 rooms]
- Presidential Suite [1 room]
- Premier Deluxe Twin [5 rooms]
- The Ritz Carlton Suite [1 room]
- Premier Deluxe King [4 rooms]

Restaurant / Bar

- ☒ Japanese
- ☐ Chinese
- ☒ Italian
- ☒ BBQ
- ☒ Western
- ☐ French
- ☒ Bar
- ☒ Lounge
- ☒ Other (Buffet-Berakfast)

Other

- ☒ Internet access in room
- ☐ Business section
- ☒ Fitness center
- ☒ Spa
- ☒ Esthetic salon
- ☒ Indoor pool
- ☒ Outdoor pool
- ☒ One king or two double beds
- ☒ Wi-Fi in guest rooms

Schedule for outdoor pool is subject to change due to weather or temperature.

Swimming Season
Beach: May.-Oct.
Outdoor Pool: Apr.-Oct.

Coco Garden Resort Okinawa

501 Ishikawa-Iha, Uruma City 904-1115 / TEL: +81(98)965-1000 / FAX: +81(98)965-2622
URL: http://www.cocogarden.com (Japanese)

Coco Garden Resort Okinawa is located on a verdant hill in central Okinawa's Uruma City. Overlooking the Pacific Ocean, it offers a tennis court, a garden pool and the Coco Spa, which offers body massage and various treatments, using in

abundance locally produced natural ingredients high in vitamins and minerals. Guest rooms with attractive flooring, simple but fashionable furniture and spacious bathrooms allow true leisurely stays.



Guest rooms (by type) [Total number of rooms: 96]

- Garden Deluxe Twin [48 rooms]
- Garden Cottage Twin [6 rooms]
- Garden Deluxe Double [10 rooms]
- Garden Twin [17 rooms]
- Garden Deluxe Double (with canopy bed) [2 rooms]
- Connecting room [10 rooms]
- Garden Cottage Double [5 rooms]

Restaurant / Bar

- ☐ Japanese
- ☒ Chinese
- ☐ Italian
- ☐ BBQ
- ☐ Western
- ☐ French
- ☒ Bar
- ☐ Lounge
- ☐ Other ()

Other

- ☐ Internet access in room
- ☐ Business section
- ☐ Fitness center
- ☐ Spa
- ☒ Esthetic salon
- ☐ Indoor pool
- ☒ Outdoor pool
- ☐ One king or two double beds
- ☐ Wi-Fi in guest rooms

Swimming Season
Outdoor Pool: year-round

Costa Vista Okinawa Hotel & Spa

1478 Kishaba, Kitanakagusuku 901-2311
TEL: +81(98)935-1500 / FAX: +81(98)935-1600 / URL: http://www.costavista.jp (Japanese)

Sitting on a hilltop in central Okinawa, this hotel has a commanding view of the ocean. Its restaurant offers a menu of health-conscious dishes and uses environment-friendly materials for decor

and appointments. Spacious guest rooms with a spectacular view make for a relaxing stay.



Guest rooms (by type) [Total number of rooms: 214]

- Standard Twin [100 rooms]
- Family Room [1 room]
- Deluxe Twin [91 rooms]
- Junior Suite [4 rooms]
- Double [16 rooms]
- Deluxe Suite [1 room]
- Barrier-free Room [1 room]

Restaurant / Bar

- ☒ Japanese
- ☐ Chinese
- ☐ Italian
- ☐ BBQ
- ☒ Western
- ☐ French
- ☒ Bar
- ☒ Other (Café)

Other

- ☒ Internet access in room
- ☐ Business section
- ☒ Fitness center
- ☒ Spa
- ☒ Esthetic salon
- ☐ Indoor Pool
- ☐ Outdoor Pool
- ☐ One king or two double bed
- ☐ Wi-Fi in guest rooms

Hotel Nikko Alivila

600 Gima, Yomitan Village 904-0393
TEL: +81(98)982-9111 / FAX: +81(98)958-6620 / URL: http://www.alivila.co.jp/

A superior resort with a white Spanish colonial exterior and a red tile roof, this hotel is situated on a beautiful beach in the central Okinawan village of Yomitan, known for its largely unspoiled beaches in addition to folk crafts and pottery. Well-appointed guest

rooms with balconies, a Spanish-style interior and art, and restaurants with unique cuisine will make your stay unforgettable. A sunlight-filled indoor relaxation pool and an aesthetic salon with treatment courses including hand massage are popular with guests.



Guest rooms (by type) [Total number of rooms: 396]

- Royal Suite [1 room]
- Placient Twin (non-Smoking Room) [30 rooms]
- Alivila Suite [3 rooms]
- Ocean Front Twin [21 rooms]
- Corner Luxury Twin [9 rooms]
- Premiere Twin [106 rooms]
- Corner Deluxe Twin (non-Smoking) [4 rooms]
- Superior Twin [34 rooms]
- New Standard Twin [69 rooms]
- Standard Twin [119 rooms]

Restaurant / Bar

- ☒ Japanese
- ☒ Chinese
- ☐ Italian
- ☐ BBQ
- ☒ Western
- ☐ French
- ☒ Bar
- ☒ Lounge
- ☒ Other (Grill & Buffet / Teppan-yaki / Izakaya)

Other

- ☒ Internet access in room
- ☐ Business section
- ☐ Fitness center
- ☒ Spa
- ☒ Esthetic salon
- ☒ Indoor pool
- ☒ Outdoor pool
- ☐ One king or two double beds
- ☐ Wi-Fi in guest rooms

Swimming Season
Beach: late Mar.-Oct.
Outdoor Pool: late Mar.-Oct.

Laguna Garden Hotel

4-1-1 Mashiki, Ginowan City 901-2224
TEL: +81(98)897-2121 / FAX: +81(98)897-7711 / URL: http://www.laguna-garden.jp/en/

Okinawa, the Laguna Garden is located in the highly accessible bay area of Ginowan, one of the prefecture’s official Convention Cities. It is close to tourist favorites Naha City and Chatan Town and

provides guests with all the marine and urban attractions they could want. The majority of guest rooms come with an ocean view.



Guest rooms (by type) [Total number of rooms: 303]

- Semi-double [20 rooms]
- Twin Moderate [60 rooms]
- Twin Superior [71 rooms]
- Twin Deluxe [26 rooms]
- Twin Corner [14 rooms]
- Suite Corner [6 rooms]
- Suite Deluxe [2 rooms]
- Suite Laguna House [1 room]
- Japanese-style Room Moderate [2 rooms]
- Japanese-style Room Superior [1 room]
- Japanese-style Room Deluxe [1 room]
- Double [11 rooms]
- Twin East Wing A [56 rooms]
- Twin East Wing B [32 rooms]

Restaurant / Bar

- ☒Japanese ☒Chinese ☐Italian ☐BBQ
- ☒Western ☐French ☒Bar ☒Lounge
- ☒Other (Japanese BBQ / Okinawan dishes available at the Japanese restaurant)

Other

- ☒Internet access in room ☒Internet Section ☒Fitness center
- ☐Spa ☒Esthetic salon ☒Indoor pool ☒Outdoor pool
- ☐One king or two double beds ☐Wi-Fi in guest rooms
- Swimming Season
- Outdoor Pool: late Apr.-Oct.

Okinawa Zampa Misaki Royal Hotel

1575 Uza, Yomitan Village 904-0394 / TEL: +81(98)958-5000
FAX: +81(98)958-3970 / URL: http://www.daiwaresort.co.jp/okinawa (Japanese)

The Okinawa Zampa Misaki Royal Hotel is a Y-shaped resort hotel located in the vicinity of scenic Cape Zampa in Yomitan, a village in central Okinawa known to be rich both in nature and culture. Guests

can enjoy a view of the East China Sea from the upper floors. The sunset, visible from the French restaurant on the top floor, is breathtaking.



Guest rooms (by type) [Total number of rooms: 477]

- Suite Room [9 rooms]
- Superior Room [18 rooms]
- Japanese-style Room [38 rooms]
- Standard Room [408 rooms]
- Universal Room [2 rooms]
- Royal Suite Room [2 rooms]

Restaurant / Bar

- ☒Japanese ☒Chinese ☐Italian ☒BBQ
- ☒Western ☒French ☒Bar ☐Lounge
- ☒Other (Buffet / Cafe)

Other

- ☒Internet access in room ☐Business section ☒Fitness center
- ☐Spa ☒Esthetic salon ☐Indoor pool ☒Outdoor pool
- ☐One king or two double beds ☒Wi-Fi in guest rooms
- Swimming Season
- Beach: late Apr.-Oct.
- Outdoor Pool: Apr.-Oct.

The Beach Tower Okinawa

8-6 Mihama, Chatan Town 904-0115
TEL: +81(98)921-7711 / FAX: +81(98)921-7700 / URL: http://www.dormy-hotels.com/okinawa2/en/

Beach Tower Okinawa is a high-rise resort overlooking Sunset Beach and also offering a beautiful night view of Chatan, the booming entertainment center of central Okinawa Island, with numerous

restaurants and cafés, a movie theater and a shopping mall all situated in the area. Guests can take advantage of Therme VILLA Chula-U, an adjoining relaxation facility, for free.



Guest rooms (by type) [Total number of rooms: 280]

- Sky Suite [9 rooms]
- Terrace Suite(type S2) [2 rooms]
- Terrace Suite(type S1) [4 rooms]
- Corner Suite [22 rooms]
- Family Suite [83 rooms]
- Executive Twin [32 rooms]
- Beach Tower Standard [85 rooms]
- Compact Twin [6 rooms]
- Tourist Double [24 rooms]
- Economy Double [9 rooms]
- Single [2 rooms]
- Pet Room [2 rooms]

Restaurant / Bar

- ☒Japanese ☐Chinese ☐Italian ☒BBQ
- ☒Western ☐French ☒Bar ☒Lounge
- ☒Other (Okinawan / Buffet)

Other

- ☒Internet access in room ☒Internet section ☐Fitness center
- ☒Spa ☒Esthetic salon ☐Indoor pool ☒Outdoor pool
- ☒One king or two double beds ☐Wi-Fi in guest rooms
- Swimming Season
- Beach: mid Apr.-late Oct.

Tokyo Dai-ichi Hotel OKINAWA GRAND MER RESORT

2-8-1 Yogi, Okinawa City 904-2174 / TEL: +81(98)931-1500
FAX: +81(98)931-1509 / URL: http://daiichihotel-okinawa.com/english.html

All guest rooms at this hotel, located in a quiet residential area in a suburb of Okinawa City on the eastern side of the island, offer pleasant views of the surrounding area and the Pacific Ocean. The

spacious, well-equipped guest rooms are suitable for an extended stay.



Guest rooms (by type) [Total number of rooms: 300]

- Standard Twin [91 rooms]
- Superior Twin [79 rooms]
- Japanese-style Room [22 rooms]
- Deluxe Twin [45 rooms]
- Studio Queen [56 rooms]
- Suite [7 rooms]

Restaurant / Bar

- ☒Japanese ☐Chinese ☐Italian ☐BBQ
- ☒Western ☐French ☐Bar ☒Lounge
- ☐Other ()

Other

- ☒Internet access in room ☒Business section ☒Fitness center
- ☐Spa ☒Esthetic salon ☒Indoor pool ☐Outdoor pool
- ☒One king or two double beds ☒Wi-Fi in guest rooms

Daiwa Roynet Hotel Naha-Kokusaidori

2-1-1 Asato Naha City 902-0067 / TEL: +81(98)868-9055 / FAX: +81(98)868-9056
URL: http://www.daiwaroynet.jp/english/index.html

Part of the Daiwa Roynet Hotel chain with branches throughout Japan, Daiwa Roynet Hotel Naha-Kokusaidori is a one-minute walk from the Makishi monorail station, which is 15 minutes from Naha Airport. This hotel is close to the central

business district as well as Kokusai Street, with a location that is ideally suited for business, sightseeing and shopping. This hotel features special rooms for women that are equipped with special amenities and beauty treatment items.



Guest rooms (by type) [Total number of rooms: 261]

- Standard Double Room [153 rooms]
- Lady's Room [9 rooms]
- Twin Room [72 rooms]
- Hollywood Twin Room [9 rooms]
- Deluxe Twin Room [9 rooms]
- Fourth Room [3 rooms]
- Universal Room [6 rooms]

Restaurant / Bar

- ☐Japanese ☐Chinese ☐Italian ☐BBQ
- ☐Western ☐French ☐Bar ☐Lounge
- ☒Other (Buffet)

Other

- ☒Internet access in room ☐Business section ☐Fitness center
- ☐Spa ☐Esthetic salon ☐Indoor pool ☐Outdoor pool
- ☐One king or two double beds ☒Wi-Fi in guest rooms

DoubleTree by Hilton Naha

3-15 Higashi-machi Naha City 900-0034 / TEL: +81(98)862-0123 / FAX: +81(98)862-2804
URL: http://doubletree3.hilton.com

This hotel opened for business in May 2012 as a city hotel equipped with meeting rooms for business functions. The aesthetic salon features original treatments using such French skincare brands as Carita. The hotel offers various types of

rooms as well as easy access to the monorail station. It also serves as a good base for walking around Naha. Their concept is valuing hospitality, and guests will each receive a warm chocolate chip cookie upon arrival.



Guest rooms (by type) [Total number of rooms: 227]

- Double Bed Guestroom [63 rooms]
- Queen Bed Guestroom [36 rooms]
- King Bed Guestroom [12 rooms]
- Twin 2 Beds Guestroom [42 rooms]
- Triple 3 Beds Guestroom [28 rooms]
- Queen Bed Accessible [5 rooms]
- Double Bed Premium [14 rooms]
- Queen Bed Premium [8 rooms]
- King Bed Deluxe Room [11 rooms]
- Twin 2 Beds Deluxe Room [5 rooms]
- Triple 3 Beds Deluxe Room [2 rooms]
- King 2 room Suite [1 room]

Restaurant / Bar

- ☒Japanese ☐Chinese ☐Italian ☐BBQ
- ☒Western ☐French ☐Bar ☐Lounge
- ☐Other ()

Other

- ☒Internet access in room ☒Business section ☒Fitness center
- ☐Spa ☒Esthetic salon ☐Indoor pool ☐Outdoor pool
- ☒One king or two double beds ☒Wi-Fi in guest rooms

Hyakuna Garan

1299-1 Yamashitabaru, Hyakuna, Tamagusuku, Nanjo City 901-0603
TEL: +81(98)949-1011 / URL: http://www.hyakunagaran.com/English/

Hyakuna Garan is located in Nanjo City on the main island’s southern tip, a region dotted with sacred sites. Situated on a cape sandwiched between mountains and ocean, the water is so clear that guests can look out from their rooms and easily see fish

swimming below. Spectacular sunsets and moonlit night skies provide a feast for the eyes, while artwork depicting Ryukyuan mythology adorns the walls, giving the atmosphere of a gallery. The hotel building features a fusion of Okinawan and Japanese styles.



Guest rooms (by type) [Total number of rooms: 15]

- Standard Twin [13 rooms]
- Special Rooms (1 Western, 1 Japanese) [2 rooms]

Restaurant / Bar

- ☒Japanese ☒Chinese ☒Italian ☒BBQ
- ☒Western ☒French ☒Bar ☐Lounge
- ☒Other (Ryukyuan)

Other

- ☒Internet access in room ☒Business section ☐Fitness center
- ☒Spa ☒Esthetic salon ☐Indoor pool ☐Outdoor pool
- ☒One king or two double beds ☒Wi-Fi in guest rooms
- Swimming Season
- Beach: Apr.-Oct.

Southern Beach Hotel & Resort Okinawa

1-6-1 Nishizaki-cho, Itoman City 901-0305 / TEL: +81(98)992-7500
FAX: +81(98)992-7600 / URL: http://www.southernbeach-okinawa.com/english/

Nestled between Itoman Port, the heart of Okinawa’s fishing industry, and the white sands of Bibi Beach Itoman, Southern Beach Hotel & Resort’s modern design uses natural light and overflows with lush foliage. Its ocean view guest rooms offer a panorama of the Kerama. Equipped with a huge

outdoor pool, an indoor pool for year-round use and Bibi Beach Itoman only a one-minute walk away, there are many ways to enjoy the water. The food in the restaurant buffet is carefully prepared with the freshest ingredients, and you can dine while looking out over the expansive southern panorama.



Guest rooms (by type) [Total number of rooms: 495]

- Superior Room [264 room]
- Deluxe Rooms [215 room]
- Suite Rooms [9 room]
- Barrier-Free Room [7 rooms]

Restaurant / Bar

- ☒Japanese ☒Chinese ☐Italian ☐BBQ
- ☒Spa ☐French ☐Bar ☐Lounge
- ☐Other (Japanese, Chinese, Western buffet)

Other

- ☒Internet access in room ☐Internet section ☐Fitness center
- ☐Spa ☒Esthetic salon ☒Indoor pool ☒Outdoor pool
- ☐One king or two double beds ☐Wi-Fi in guest rooms
- Swimming Season
- Beach: Apr.-Oct.
- Outdoor Pool: Apr.-Oct.

Hotel Hokke Club Naha-Shintoshin

Hotel Hokke Club Naha-Shintoshin is well established and well known for its thoughtful services. The hotel is a two-minute walk from the Omoromachi monorail station, which is 19 minutes from Naha

4-3-8 Omoromachi, Naha City 900-0006
TEL: +81(98)860-6611 / FAX: +81(98)860-6711 / URL: <http://www.hokke.co.jp/4701/> (Japanese)

Airport, and offers easy access to a duty-free shop and large shopping mall. The hotel is in a prime location for both sightseeing and business.



Guest rooms (by type) [Total number of rooms: 210]

- Standard Single [138 rooms]
- Deluxe Single [10 rooms]
- Standard Twin [40 rooms]
- Deluxe Twin [21 rooms]
- Deluxe Wide Twin [1 rooms]

Restaurant / Bar

- ☐ Japanese
- ☐ Chinese
- ☐ Italian
- ☐ BBQ
- ☐ Western
- ☐ French
- ☐ Bar
- ☐ Lounge
- ☒ Other (Buffet)

Other

- ☒ Internet access in room
- ☐ Business Section
- ☐ Fitness center
- ☐ Spa
- ☐ Esthetic salon
- ☐ Indoor pool
- ☐ Outdoor pool
- ☐ One king or two double beds
- ☒ Wi-Fi in guest rooms

Hotel JAL City Naha

Hotel JAL City Naha ensures a relaxing stay for guests although it is located on Kokusai Street, the center of Naha City. The area is perfectly suited to business, sightseeing and shopping. Guests can enjoy

a view of the East China Sea from some high floor guest rooms.



Guest rooms (by type) [Total number of rooms: 304]

- Single [64 rooms]
- Double [13 rooms]
- Standard Twin [69 rooms]
- Deluxe Twin [89 rooms]
- Triple [3 rooms]
- Luxury [3 rooms]
- Universal [6 rooms]
- Executive Single [12 rooms]

Restaurant / Bar

- ☐ Japanese
- ☐ Chinese
- ☐ Italian
- ☐ BBQ
- ☐ Western
- ☒ French
- ☐ Bar
- ☐ Lounge
- ☐ Other ()

Other

- ☒ Internet access in room
- ☐ Business section
- ☐ Fitness center
- ☐ Spa
- ☐ Esthetic salon
- ☐ Indoor pool
- ☐ Outdoor pool
- ☒ One king or two double beds
- ☐ Wi-Fi in guest rooms

Hotel Nikko Naha Grand Castle

Standing on centuries-old Shuri Hill in Naha City, on the subtropical island of Okinawa, the hotel offers the conveniences of a metropolitan hotel with the amenities of a resort hotel. Its top floor accommodates

a bar and a banquet hall with a magnificent view of the East China Sea and Naha City.



Guest rooms (by type) [Total number of rooms: 333]

- Royal Suite [1 room]
- 3 Junior Suites and 1 Japanese-style Suite [4 rooms]
- Executive Twin [42 rooms]
- Deluxe Twin [136 rooms]
- Standard Twin [120 rooms]
- Family Room [4 rooms]
- Double [24 rooms]
- Barrier-free Room [2 rooms]

Restaurant / Bar

- ☒ Japanese
- ☒ Chinese
- ☐ Italian
- ☐ BBQ
- ☒ Western
- ☐ French
- ☒ Bar
- ☐ Lounge
- ☒ Other (Tea Lounge)

Other

- ☒ Internet access in room
- ☒ Business section
- ☐ Fitness center
- ☐ Spa
- ☒ Esthetic salon
- ☐ Indoor pool
- ☒ Outdoor pool
- ☐ One king or two double beds
- ☐ Wi-Fi in guest rooms

Swimming Season
Outdoor Pool: mid Apr.-Sep.

Hotel Palm Royal Naha

Hotel Palm Royal Naha is a three-minute walk from the Makishi monorail station, which is 16 minutes from Naha Airport. Ideally situated for business and sightseeing, the hotel is located on

Kokusai Street, well known for its shopping, dining and entertainment, and is also close to the central business district. Guests can enjoy a resort atmosphere in the heart of Naha City.



Guest rooms (by type) [Total number of rooms: 174]

- Semi Double [138 rooms]
- Deluxe Double [11 rooms]
- Twin [10 ooms]
- Deluxe Twin [10 rooms]
- Presidential Suite [1 room]
- Universal room [4 rooms]

Restaurant / Bar

- ☐ Japanese
- ☐ Chinese
- ☒ Italian
- ☐ BBQ
- ☐ Western
- ☐ French
- ☐ Bar
- ☐ Lounge
- ☐ Other ()

Other

- ☒ Internet access in room
- ☐ Business section
- ☐ Fitness center
- ☒ Spa
- ☐ Esthetic salon
- ☐ Indoor pool
- ☐ Outdoor pool
- ☒ One king or two double beds
- ☐ Wi-Fi in guest rooms

Hotel Royal Orion

Located right on Kokusai Street in downtown Naha, a three-minute walk from the Makishi monorail station, Hotel Royal Orion is conveniently situated for business, shopping and inner-city

1-2-21 Asato, Naha City 902-0067
TEL: +81(98)866-5533 / FAX: +81(98)862-9039 / URL: <http://www.royal-orion.co.jp/english/>



Guest rooms (by type) [Total number of rooms: 209]

- Standard Single [6 rooms]
- Special Single・Deluxe Single [10・10 rooms]
- Twin・Hollywood Twin [70・18 rooms]
- Connecting・Deluxe Twin・Executive Twin [8・72・8 rooms]
- Universal Twin [2 rooms]
- Semi Suite・Executive Suite [2・1 rooms]
- Royal Suite [1 room]

Restaurant / Bar

- ☒ Japanese
- ☒ Chinese
- ☐ Italian
- ☐ BBQ
- ☒ Western
- ☐ French
- ☒ Bar
- ☐ Lounge
- ☒ Other (Café / Lounge)

Other

- ☒ Internet access in room
- ☐ Business section
- ☐ Fitness center
- ☐ Spa
- ☒ Esthetic salon
- ☐ Indoor pool
- ☐ Outdoor pool
- ☒ One king or two double beds
- ☐ Wi-Fi in guest rooms

Loisir Hotel Naha

This urban style resort hotel, located 10 minutes from the airport by car and facing Naha Port, is equipped with the city's highest bed capacity, a hot spring, pools and other amenities. It

has one of the few natural hot springs in Okinawa, utilized for outdoor baths and a Jacuzzi.



Guest rooms (by type) [Total number of rooms: 417]

- Executive Suite [1 room]
- Junior Suite [1 room]
- Deluxe Twin B [80 rooms]
- Deluxe Twin A [142 rooms]
- Superior Twin [169 rooms]
- Japanese-style Room [24 rooms]

Restaurant / Bar

- ☒ Japanese
- ☒ Chinese
- ☐ Italian
- ☒ BBQ
- ☒ Western
- ☐ French
- ☒ Bar
- ☐ Lounge
- ☒ Other (Café / Lounge)

Other

- ☒ Internet access in room
- ☐ Business section
- ☐ Fitness center
- ☒ Spa
- ☒ Esthetic salon
- ☒ Indoor pool
- ☒ Outdoor pool
- ☐ One king or two double beds
- ☐ Wi-Fi in guest rooms

Swimming Season
Outdoor Pool: Apr.-Oct.

Mercure Okinawa Naha

Mercure Okinawa Naha is a deluxe hotel operated by the French-based Mercure hotel chain, which has more than 700 three and four-star hotels in 50 countries. Mercure Okinawa Naha, which opened in April 2012, is the sixth Mercure hotel in Japan. Mercure Okinawa Naha

is conveniently located in Naha, a 10-minute ride from Naha Airport by monorail, car or taxi. Kokusai Street, well known for its shopping, dining and entertainment, is an easy 10-minute walk from the hotel. For business or pleasure, Mercure Okinawa Naha is an ideal place to stay.



Guest rooms (by type) [Total number of rooms: 260]

- Standard Double [103 rooms]
- Hollywood Twin [45 rooms]
- Superior Twin [63 rooms]
- Superior Triple - 41 rooms]
- Deluxe Twin - 6 rooms]
- Deluxe King - 2 rooms]

Restaurant / Bar

- ☐ Japanese
- ☐ Chinese
- ☐ Italian
- ☐ BBQ
- ☐ Western
- ☒ French
- ☐ Bar
- ☐ Lounge
- ☐ Other ()

Other

- ☒ Internet access in room
- ☒ Business section
- ☐ Fitness center
- ☐ Spa
- ☒ Esthetic salon
- ☐ Indoor pool
- ☐ Outdoor pool
- ☒ One king or two double beds
- ☒ Wi-Fi in guest rooms

Okinawa Harborview Crowne Plaza

This hotel is conveniently located, a 10-minute drive from the airport and 10 minutes on foot from Naha's main street, the business center of Okinawa. An incomparable blend of business and leisure

facilities can be found within the stylish, modern exterior, coupled with a distinguished hospitality and outstanding level of service.



Guest rooms (by type) [Total number of rooms: 352]

- Standard Twin [206 rooms]
- Superior Twin [60 rooms]
- Premium Twin [50 rooms]
- Premium Double [28 rooms]
- Suite [8 rooms]

Restaurant / Bar

- ☒ Japanese
- ☒ Chinese
- ☐ Italian
- ☐ BBQ
- ☒ Western
- ☒ French
- ☐ Bar
- ☒ Lounge
- ☒ Other (Buffet / Café)

Other

- ☒ Internet access in room
- ☒ Business section
- ☐ Fitness center
- ☒ Spa
- ☒ Esthetic salon
- ☐ Indoor pool
- ☒ Outdoor pool
- ☒ One king or two double beds
- ☐ Wi-Fi in guest rooms

Swimming Season
Outdoor Pool: May.-Sep.

Okinawa Miyako Hotel

40 Matsugawa, Naha City 902-0062 / TEL: +81(98)887-1112
FAX: +81(98)887-1020 / URL: http://www.miyakohotels.ne.jp/okinawa/english/index.html

This hotel is located in Okinawa’s ancient capital district and is a 15-minute walk from Shurijo Castle Park, a World Heritage site. To reach the central and northern regions of Okinawa, take

the expressway from the Naha interchange, which is easily accessible, only about 5 minutes by car.



Guest rooms (by type) [Total number of rooms: 307]

- Suite [2 rooms]
- Family Room [32 rooms]
- Deluxe Twin [6 rooms]
- Twin [99 rooms]
- Premium Twin [143 rooms]
- Double [2 rooms]
- Single [23 rooms]

Restaurant / Bar

- ☒ Japanese ☐ Chinese ☐ Italian ☐ BBQ
- ☐ Western ☒ French ☒ Bar ☐ Lounge
- ☒ Other (Buffet)

Other

- ☒ Internet access in room ☐ Business section ☐ Fitness center
- ☐ Spa ☐ Esthetic salon ☐ Indoor pool ☐ Outdoor pool
- ☐ One king or two double beds ☐ Wi-Fi in guest rooms

Okinawa Nahana Hotel & Spa

2-1-5 Kume, Naha City 900-0033 / TEL: +81(98)866-0787
FAX: +81(98)867-7787 / URL: http://www.ishinhotels.com/okinawanahana/en/index.html

This city resort hotel in Naha is conveniently located on a major highway, a three-minute walk to a monorail station and 10 minutes to the airport by car. Guests can enjoy the quiet breezes of a relaxing

resort atmosphere in the midst of the urban bustle of the city center.



Guest rooms (by type) [Total number of rooms: 200]

- Single [8 rooms]
- Double [8 rooms]
- Standard Twin [46 rooms]
- Superior Twin [100 rooms]
- Deluxe Twin [11 rooms]
- Deluxe Plus Twin [16 rooms]
- Japanese Neo Ryukyu [2 rooms]
- Nahana Superior Twin [7 rooms]
- Nahana Deluxe Plus Twin [2 rooms]

Restaurant / Bar

- ☐ Japanese ☐ Chinese ☐ Italian ☐ BBQ
- ☐ Western ☐ French ☒ Bar ☐ Lounge
- ☒ Other (Modern Ryukyuan)

Other

- ☒ Internet access in room ☐ Business section ☐ Fitness center
- ☒ Spa ☒ Esthetic salon ☐ Indoor pool ☐ Outdoor pool
- ☒ One king or two double bed ☐ Wi-Fi in guest rooms

Okinawa Port Hotel

1-6-1 Nishi, Naha City 900-0036 / TEL: +81(98)868-1118
FAX: +81(98)868-2189 / URL: http://www.ishinhotels.com/okinawa-porthotel/en/index.html

The Okinawa Port Hotel is seven-minute drive from the airport and five minutes on foot from the Asahibashi monorail station, providing easy access to the central Naha area. The hotel has seven

different types of banquet halls for a wide variety of purposes.



Guest rooms (by type) [Total number of rooms: 193]

- Double [6 rooms]
- Twin-A [100 rooms]
- Twin-B [48 rooms]
- Triple [18 rooms]
- Fourth [6 rooms]
- Japanese/Western-style Room [7 rooms]
- Deluxe Twin [6 room]
- Suite [2 rooms]

Restaurant / Bar

- ☐ Japanese ☐ Chinese ☐ Italian ☐ BBQ
- ☐ Western ☐ French ☐ Bar ☐ Lounge
- ☒ Other (Lounge / Japanese-Western)

Other

- ☒ Internet access in room ☐ Business section ☐ Fitness center
- ☒ Spa ☐ Esthetic salon ☐ Indoor pool ☐ Outdoor pool
- ☐ One king or two double beds ☐ Wi-Fi in guest rooms

Pacific Hotel Okinawa

3-6-1 Nishi, Naha City 900-0036 / TEL: +81(98)868-5162
FAX: +81(98)868-8876 / URL: http://www.pacifichotel.jp/ (Japanese)

The hotel overlooks Naha Port, situated about a 15-minute drive from Naha Airport. Its Business Center facility offers a wide range of business information as well as use of a computer, fax

machine and photocopier. Conference rooms of varying sizes accommodate various event needs.



Guest rooms (by type) [Total number of rooms: 389]

- Pacific Combination Room (Japanese and Western) [8 rooms]
- Pacific Deluxe Room [11 rooms]
- Deluxe Twin Room [36 rooms]
- Standard Twin Room [18 rooms]
- Economy Twin Room [196 rooms]
- Economy Triple Room [54 rooms]
- Deluxe Single Room [12 rooms]
- Standard Single Room [21 rooms]
- Value Single Room [4 rooms]
- Economy Single Room [10 rooms]
- Pacific Suite Room [1 room]
- Pacific Deluxe Suite Room [1 room]
- Pacific Premium Twin Room [11 rooms]
- Pacific Deluxe Double Room [1 rooms]
- Deluxe Double Room [2 rooms]
- Standard Double Room [3 rooms]

Restaurant / Bar

- ☒ Japanese ☒ Chinese ☐ Italian ☐ BBQ
- ☒ Western ☐ French ☒ Bar ☐ Lounge
- ☒ Other (Buffet)

Other

- ☒ Internet access in room ☒ Business section ☐ Fitness center
 - ☒ Spa ☒ Esthetic salon ☐ Indoor pool ☒ Outdoor pool
 - ☐ One king or two double beds ☐ Wi-Fi in guest rooms
- Swimming Season
Outdoor Pool: late Apr.-Sep.

Rihga Royal Gran Okinawa

1-9 Asahimachi Naha City 900-0029
TEL: +81(98)867-3331 / FAX: +81(98)867-3332 / URL: http://www.rihgaroyalgran-okinawa.co.jp/en/

This hotel opened for business on June 1, 2012. It is located close to the Asahibashi monorail station and offers easy access to Kokusai Street, the central business district and Okinawa Cellular Stadium, where professional baseball games and various other

events are held. The lobby, front desk and Dining & Bar Aiju are on the top floor, offering views of the Kerama Islands and the sunset. Artworks by Okinawan artists that are on display give the hotel a modern and unique ambience.



Guest rooms (by type) [Total number of rooms: 157]

- Gran Twin [152 rooms]
- Gran Suite [4 rooms]
- Royal Suite [1 room]

Restaurant / Bar

- ☐ Japanese ☐ Chinese ☒ Italian ☐ BBQ
- ☐ Western ☒ French ☐ Bar ☐ Lounge
- ☒ Other (Buffet)

Other

- ☒ Internet access in room ☐ Business section ☐ Fitness center
- ☐ Spa ☐ Esthetic salon ☐ Indoor pool ☐ Outdoor pool
- ☐ One king or two double beds ☒ Wi-Fi in guest rooms

The Naha Terrace

2-14-1 Omoromachi, Naha City 900-0006 / TEL: +81(98)864-1111
FAX: +81(98)863-3275 / URL: http://www.terrace.co.jp/en/naha/

The Naha Terrace is a city resort hotel in the Shintoshin area of Naha City, the capital of Okinawa. The location is convenient for guests on holiday as well as on business. First-class hospitality

with a dignified atmosphere, guest rooms with elegant interiors and a 24-hour butler service all serve to make your stay unforgettable.



Guest rooms (by type) [Total number of rooms: 145]

- Deluxe Twin [79 rooms]
- Deluxe King [10 rooms]
- Club Twin [26 rooms]
- Club King [10 rooms]
- Executive Suite Twin [16 rooms]
- Executive Suite King [3 rooms]
- Terrace Suite [1 room]

Restaurant / Bar

- ☒ Japanese ☐ Chinese ☐ Italian ☐ BBQ
- ☐ Western ☒ French ☐ Bar ☒ Lounge
- ☒ Other (Teppanyaki)

Other

- ☒ Internet access in room ☒ Business section ☒ Fitness center
 - ☐ Spa ☒ Esthetic salon ☐ Indoor pool ☒ Outdoor pool
 - ☒ One king or two double beds ☐ Wi-Fi in guest rooms
- Swimming Season
Outdoor Pool: Apr.-Oct.

The Yuinchi Hotel Nanjo

1688 Shinzato, Sashiki, Nanjo City 901-1412 / TEL: +81(98)947-0111
FAX: +81(98)947-0116 / URL: http://www.yuinchi.jp (Japanese)

Seifa Utaki and various other famous spiritual sites and tourist spots surround this red-roofed Ryukyu-style hotel which sits on Sashiki Hill in southern Okinawa. Comprising over 100,000 square meters surrounded by forest, there are an

abundance of facilities that will help you enjoy your stay while having minimum impact on the environment. Great for long stays, this wellness resort has cycling paths and sports facilities of the highest quality.



Guest rooms (by type) [Total number of rooms: 53]

- Standard Japanese [20 rooms]
- Standard Western [6 rooms]
- Deluxe Japanese [24 rooms]
- Universal Family (Barrier-Free) [1 room]
- Deluxe Hybrid Suite [2 rooms]

Restaurant / Bar

- ☐ Japanese ☐ Chinese ☐ Italian ☒ BBQ
- ☒ Western ☐ French ☐ Bar ☐ Lounge
- ☒ Other (International)

Other

- ☒ Internet access in room ☒ Internet section ☒ Fitness center
 - ☒ Spa ☒ Esthetic salon ☒ Indoor pool ☒ Outdoor pool
 - ☐ One king or two double beds ☐ Wi-Fi in guest rooms
- Swimming Season
Beach: Jul.-Aug.

Day trip to the outlying islands

Kerama Islands

Located 40 kilometers west of Naha, the Kerama Islands include some 20 small and large islands. The Keramas, famous for their extraordinarily beautiful waters, offer world-class dive sites and good spots for whale watching.



Access

High-speed ferry: Approximately 50-70 minutes from Tomari Port in Naha, two to three trips a day
Ferry: Approximately 90-120 minutes from Tomari Port, one trip a day
Air: Private helicopter charter only

Ie Island

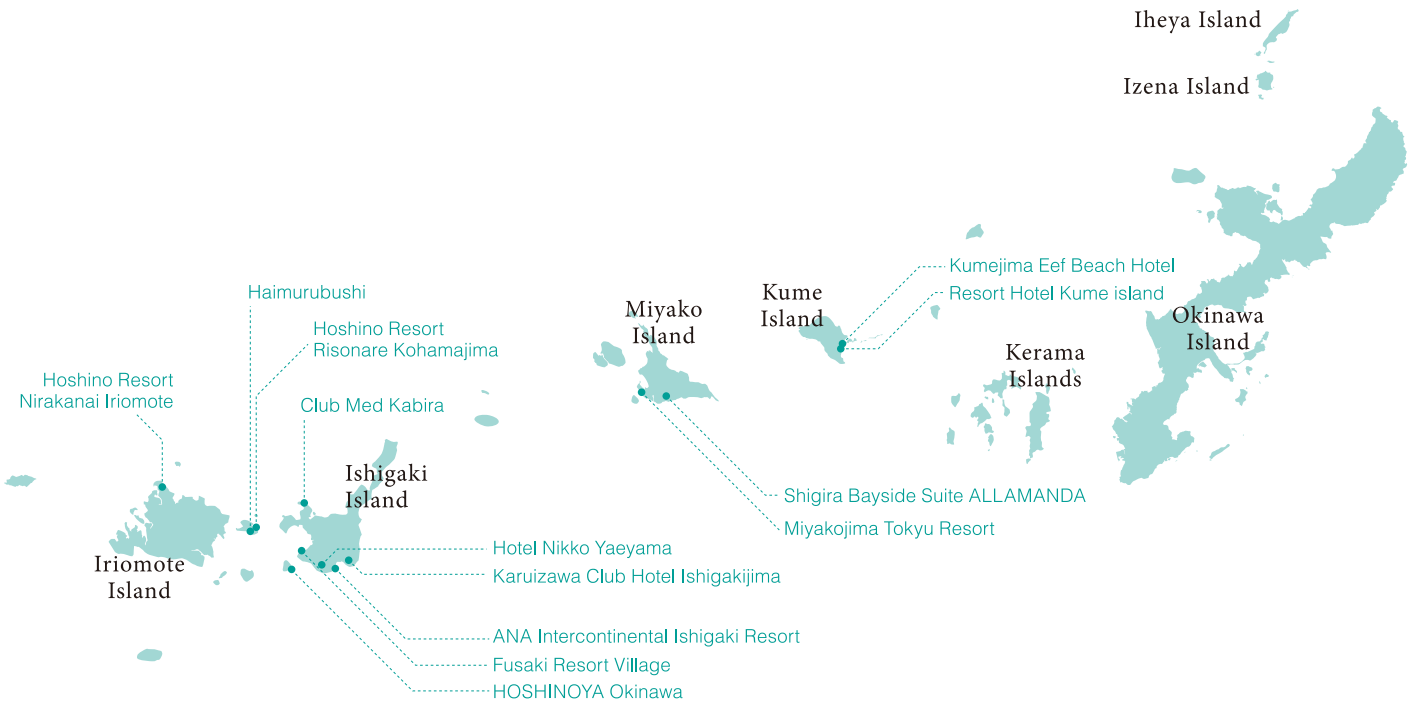
Ie Island is located nine kilometers northwest of the Motobu Peninsula. The spectacular view from the top of Mount Gusuku, popularly known as Tacchu, has been designated one of the Top 8 Scenic Views of Okinawa by the prefecture. The Lily Festival is held from late April to May, and the Lily Field Park is blanketed with 1 million teppouyuri -- a variety of lily native to the Ryukyu Islands.



Access

Ferry: Approximately 30 minutes from Motobu Port, 4 trips a day

Hotels on
outer islands



ANA Intercontinental Ishigaki Resort

Surrounded by the world’s most beautiful beach and other natural blessings of Ishigaki, one of Okinawa’s outer islands, the hotel offers a luxurious resort life created especially for rest and relaxation.

Among its featured services is the esthetic beauty treatment.

Guest rooms (by type) [Total number of rooms: 255]

Restaurant / Bar

Other

Club Med Kabira

Situated on Okinawa’s outer island of Ishigaki, this international resort by Kabira Bay, a nationally renowned scenic beauty, has various sports facilities and a theater in addition to restaurants and bars. Its all-inclusive package includes airfare, accommodation, meals and entertainment, and allows participation in all kinds of sports programs.

Guest rooms (by type) [Total number of rooms: 181]

Restaurant / Bar

Other

Fusaki Resort Village

Fusaki Resort Village is composed of traditionally styled Ryukyuan red-tiled cottages. The beautiful white beach is frequented annually by sea turtles laying their eggs, and the view of the

sunset from the pontoon is fabulous. Lush gardens of subtropical trees and flowers, and other facilities ensure a pleasant, laid-back holiday.

Guest rooms (by type) [Total number of rooms: 151]

Restaurant / Bar

Other

Haimurubushi

Located on Kohama Island, about 400km south of Okinawa, Haimurubushi resort's red-tiled cottages nest among the coral reefs and pristine waters of the Yaeyama islands. Enjoy azure seas and

skies, vivid flora and fauna, and the varied marine life of the subtropics. Meals are prepared with an array of local Okinawan ingredients.

Guest rooms (by type) [Total number of rooms: 110]

Restaurant / Bar

Other

HOSHINOYA Okinawa

Under the concept of “Discover the ultimate Japan experience,” HOSHINOYA Okinawa has been created as a village in harmony with the fascinating subtropical island of Taketomi, where the culture of Okinawa has survived intact to this day. With a

farming village nearby that has been officially designated a Group of Traditional Buildings, this hotel boasts 48 traditional Okinawan-style houses as private villas.

Guest rooms (by type) [Total number of rooms: 48]

Restaurant / Bar

Other

Hotel Nikko Yaeyama

An affiliated hotel of the JAL group, this hotel is one of the major resort hotels on Okinawa’s outer island of Ishigaki, conveniently located an urban setting, 10 minutes from the airport. Its popular

Garden Terrace serves barbequed Ishigaki beef, the nationally known, meltingly smooth, prime beef produced on the island.

Guest rooms (by type) [Total number of rooms: 236]

Restaurant / Bar

Other

Hoshino Resort Nirakanai Iriomote

2-2 Uehara, Taketomi Town, Yaeyama 907-1541 / TEL: +81(50)3786-0022
FAX: +81(98)869-3787 / URL: <http://nirakanai-iriomotejima.com/> (Japanese)

This tourist sanctuary blends into the scenery of Tsukigahama, one of Iriomote Island’s most celebrated beauty spots. All rooms have bed net-fitted daybeds, and there are plenty of eco-activities to be

enjoyed on island. In an effort to minimize waste and protect the environment, toothbrushes, combs, razors, etc., are not provided at the resort.



Guest rooms (by type) [Total number of rooms: 141]

- Superior Twin [100 rooms]
- Deluxe Twin [40 rooms]

Restaurant / Bar

- ☐Japanese

☐Western

☒Other (Buffet)
- ☐Chinese

☒French
- ☐Italian

☐Bar
- ☒BBQ

☐Lounge

Other

- ☐Internet access in room

☒Spa

☒One king or two double beds
- ☐Business section

☐Indoor pool

☐Wi-Fi in guest rooms
- ☐Fitness center

☒Outdoor pool

Swimming Season
Beach: Apr.-Oct.
Outdoor Pool: year-round

Karuizawa Club Hotel Ishigakijima

923-1 Miyara, Ishigaki City 907-0243 / TEL: +81(98)86-8001
FAX: +81(98)86-8500 / URL: <http://www.kariyushi.co.jp/ishigakijima/> (Japanese)

Sitting among vibrant foliage on a small rise just outside the town, this resort is a getaway for grownups. With each spacious guest room more than 58 square meters in size and the height of

Ryukyuan nouvelle cuisine carefully prepared with fresh local produce, this is a luxuriously relaxing resort befitting the Karuizawa name.



Guest rooms (by type) [Total number of rooms: 50]

- Deluxe (4 beds) [32 rooms]
- Premium Deluxe Twin [13 rooms]
- Club Suite [3 rooms]
- Royal Suite [2 rooms]

Restaurant / Bar

- ☒Japanese

☐Western

☒Other (Local nouvelle cuisine)
- ☐Chinese

☒French
- ☐Italian

☐Bar
- ☐BBQ

☒Lounge

Other

- ☒Internet access in room

☐Spa

☐One king or two double beds
- ☐Business section

☐Indoor pool

☐Wi-Fi in guest rooms
- ☐Fitness center

☒Outdoor pool

Swimming Season
Outdoor Pool: Apr.-Nov.

Hoshino Resort Risonare Kohamajima

2954 Agariomote, Kohama, Taketomi Town, Yaeyama 907-1221 / TEL: +81(98)84-6300
FAX: +81(98)84-6311 / <http://risonare-kohamajima.com/> (Japanese)

Just 25 minutes by ferry from Ishigaki Island, this luxurious hotel is nestled on the tiny island of Kohama. This island is a part of Iriomote-Ishigaki National Park and is surrounded by a coral reef.

Guests can enjoy a round of golf on the course overlooking the sea. This hotel contains over 160 modern villas and suites.



Guest rooms (by type) [Total number of rooms: 162]

- Garden Villa Standard Twin [50 rooms]
- Garden Villa Superior Twin [50 rooms]
- Superior Deluxe Suite [62 rooms]

Restaurant / Bar

- ☐Japanese

☐Western

☒Other (Buffet)
- ☐Chinese

☒French
- ☒Italian

☐Bar
- ☒BBQ

☐Lounge

Other

- ☒Internet access in room

☒Spa

☒One king or two double beds
- ☐Business section

☐Indoor pool

☐Wi-Fi in guest rooms
- ☐Fitness center

☒Outdoor pool

Swimming Season
Beach: Apr.-Oct.
Outdoor Pool: year-round

Miyakojima Tokyu Resort

914 Shimoji Yonaha, Miyakojima City 906-0305 / TEL: +81(98)76-2109
FAX: +81(98)76-6781 / <http://www.tokyuhotelsjapan.com/en/>

This hotel is on Miyako, the fourth-largest island in Okinawa Prefecture. The resort’s vast premises adjoin the beautiful Yonaha Maehama white sand beach, which stretches for 7 kilometers.

Miyako is known for its beauty, particularly the Eastern Cape, considered by many to be one of the most beautiful spots in Japan.



Guest rooms (by type) [Total number of rooms: 248]

- Twin A [84 rooms]

■ Delluxe Twin A [21 rooms]

■ Twin B [56 rooms]

■ Twin C [40 rooms]

■ Japanese-style Room Twin A [20 rooms]

■ Japanese-style Room Twin B [20 rooms]

■ Ocean Suite [1 room]

■ Coral Suite [1 room]

■ Royal Suite [1 room]

■ Single [4 rooms]

Restaurant / Bar

- ☒Japanese

☐Western

☐Other ()
- ☐Chinese

☒French
- ☒Italian

☒Bar
- ☒BBQ

☐Lounge

Other

- ☒Internet access in room

☒Spa

☐One king or two double beds
- ☐Business section

☐Indoor pool

☒Wi-Fi in guest rooms
- ☐Fitness center

☒Outdoor pool

Swimming Season
Beach: year-round
Outdoor Pool: year-round

Shigira Bayside Suite ALLAMANDA

926-25 Higashisuhara, Ueno Shinzato, Miyako Island City 906-0202 / TEL: +81(98)74-7100
FAX: +81(98)74-7102 / URL: <http://www.nanseirakuen.com/allamanda/index.html> (Japanese)

Sharing the same 23 degree latitude as Hawaii and Miami, this resort occupies 800 acres of the south portion of Miyako Island. All rooms in these vast, luxurious premises are en-suite. With an

open-air hot spring and a jungle pool fed with hot spring water, the special facilities here make it easy for guests to escape the daily grind.



Guest rooms (by type) [Total number of rooms: 174]

- Allamada Premiere House [1 facility]

■ Pool Villa Royal Suite [15 facilities]

■ Pool Villa Lagoon Suite [70 rooms]

■ Superior Suite [80 rooms]

■ Shigira Ocean Suite [2 rooms]

■ Ambassador Suite [2 rooms]

■ Royal Suite [4 rooms]

Restaurant / Bar

- ☒Japanese

☐Western

☐Other ()
- ☐Chinese

☒French
- ☒Italian

☒Bar
- ☐BBQ

☐Lounge

Other

- ☒Internet access in room

☒Spa

☒One king or two double beds
- ☐Business section

☒Indoor pool

☐Wi-Fi in guest rooms
- ☐Fitness center

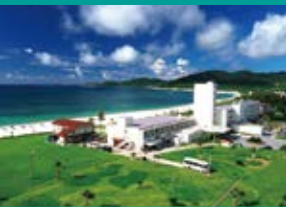
☐Outdoor pool

Kumejima Eef Beach Hotel

548 Aza Janado Kumejima Town 901-3107 / TEL: +81(98)985-7111 / FAX: +81(98)985-7117
URL: <http://www.courthotels.co.jp/kumejima/index.html> (Japanese)

Kumejima Eef Beach Hotel features a bath that uses deep ocean water. Guests can enjoy the ocean view and white sand beach spread out in front of them while relaxing in the bath. The hotel is named

after Eef Beach, which has been designated one of the 100 greatest beaches in Japan. Eef Beach consists of 1.6 miles of beautiful sand and is a perfect place for swimming and marine activities.



Guest rooms (by type) [Total number of rooms: 80]

- Standard Twin [11 rooms]
- Deluxe Twin [64 rooms]
- Junior Suite [2 rooms]
- Suite [2 rooms]
- Japanese style room [1 room]

Restaurant / Bar

- ☒Japanese

☒Western

☐Other ()
- ☒Chinese

☐French
- ☐Italian

☒Bar
- ☒BBQ

☒Lounge

Other

- ☒Internet access in room

☐Spa

☐One king or two double beds
- ☐Business section

☐Indoor pool

☐Wi-Fi in guest rooms
- ☐Fitness center

☒Outdoor pool

Swimming Season
Beach: Apr.-Oct.
Outdoor Pool: Apr.-Oct.

Resort Hotel Kume island

411 Magari, Kumejima Town 901-3112 / TEL: +81(98)985-8001
FAX: +81(98)985-8009 / URL: <http://www.kumeisland.com/>

This hotel is situated on Kume Island, an outer island of Okinawa, known for its unique natural charms such as the Hate-no Hama sand bar. Some of the guest rooms overlook Eef Beach, a

two-kilometer-long white sand beach, named one of the 100 best seascapes of Japan. The hotel organizes various marine activities as well.



Guest rooms (by type) [Total number of rooms: 200]

- Japanese / Western-style Room [2 rooms]
- Standard [72 rooms]
- Deluxe [126 rooms]

Restaurant / Bar

- ☒Japanese

☒Western

☐Other ()
- ☐Chinese

☐French
- ☐Italian

☐Bar
- ☒BBQ

☐Lounge

Other

- ☒Internet access in room

☐Spa

☐One king or two double beds
- ☐Business section

☐Indoor pool

☐Wi-Fi in guest rooms
- ☐Fitness center

☒Outdoor pool

Swimming Season
Beach: Apr.-Oct.
Outdoor Pool: Apr.-Oct.

Day trip to the outlying islands

Minna Island

Minna Island is also known as the croissant island for its unique shape. The island is surrounded by pure white sand beaches, and various marine activities are on offer.



Access

High-speed ferry: Approximately 15 minutes from Toguchi Port in Motobu, three to 12 trips a day depending on season

Komaka Island

Komaka Island is an uninhabited island ringed by beautiful white sand beaches with a total circumference of only 800 meters. On this small, empty island, you can enjoy a variety of marine activities.



Access

Ferry: Approximately 15 minutes from Nanjo City, 17 trips a day

Access



Capital: Naha City
Population: 1,406,866 (as of June 1, 2012)
Area: 2,275.91 square kilometers

Number of inhabited islands: 49
Number of foreign tourists: 300,000
Number of mainland Japan tourists: 5,530,000

Outline of Okinawa

Okinawa Prefecture consists of 160 islands stretching 400 kilometers north to south and 1,000 kilometers east to west between the Pacific Ocean and the East China Sea, of which 41 are inhabited. The chain is known as the Ryukyu Islands.

Climate

Okinawa belongs to a subtropical climatic region and has an annual average temperature of 23.4 degrees Celsius, with warmer overall average temperatures than mainland Japan. A seasonal wind blows from the south in summer and from the north in winter.

* Schedules may change depending on season. Contact the airlines for the latest information.

*As of Oct. 2012 *Times stated reflect local departure and arrival times

Flight information

Domestic

Airplanes shuttle daily between Naha Airport and the mainland's major cities including Tokyo (Haneda), Osaka (Itami, Kansai), Kobe, Nagoya and Fukuoka. Flight time from major mainland cities to Naha Airport are indicated below. Transportation to remote islands is by either airplane or boat.

Flight times from major mainland cities to Okinawa

Tokyo (Haneda) to Naha	2 hours, 10-15 minutes
Osaka (Itami) to Naha	1 hour, 50 minutes
Osaka (Kansai) to Naha	1 hour, 50-55 minutes
Kobe to Naha	1 hour, 50 minutes
Nagoya to Naha	1 hour, 50 minutes-2 hours
Fukuoka to Naha	1 hour, 35 minutes

Flight times from Naha Airport to outer islands

Kume Island	35 minutes
Aguni Island	10 minutes
Miyako Island	50 minutes
Ishigaki Island	1 hour
Yonaguni Island	1 hour, 40 minutes

All Nippon Airways (ANA) Reservations and information in English:
Tel: +81(3)6741-1120 / +81(6)7637-6679 (daily 8:00 a.m. - 8:00 p.m.)

JAL Group (JAL/JTA/RAC) Reservations for domestic flights: Tel: +81(98)863-8522 *Press 6 for English
Reservations for international flights: Tel: +81(98)862-7411 *Press 6 for English (daily 8:00 a.m. - 7:00 p.m.)

Air Asia Reservations and information: <http://www.airasia.com/jp/en/home.page>

Jetstar Reservations and information: Tel: +81(50)3163-8538(daily 24hrs)
*Press 2 for English, 3 for Mandarin Chinese, 4 for Cantonese.

Peach Aviation Reservations and information
English: Tel: +81(3)4580-8181 (Monday-Friday 9:00a.m.-6:00p.m.)
Korean: Tel: +82(02)3483-4835 (Monday-Friday 9:00a.m.-6:00p.m.)
Yue Chinese: Tel: +852(3071)3564 (Monday-Friday 9:00a.m.-6:00p.m.)

Skymark Airlines (SKY) Reservations and information in English:
Tel: +81(50)3116-7370 (daily 9:00 a.m.-7:30 p.m.)

Solaseed Air (SNA) Reservations in English: Tel: +81(6)7637-8817 (daily 6:30 a.m.-10:00 p.m.)

Okinawa - Seoul

Asiana Airlines Tel: +81(98)852-0555
Flight time: 2 hours, 20 minutes
Frequency: Every day (one flight per day)

Okinawa - Beijing

Hainan Airlines Tel: +81(98)863-4763
Flight time: 3 hours, 30 minutes
Frequency: Thursday and Sunday (one flight per day)

Air China Tel: +81(98)866-8663
Flight time: 3 hours, 50 minutes
Frequency: Wednesday and Saturday (one flight per day)

Okinawa - Shanghai

China Eastern Airlines Tel: +81(98)860-6881
Flight time: 2 hours, 10 minutes
Frequency: Everyday (1-2 flights per day)

Hong Kong Express Airways Tel: +81(98)863-4763
Flight time: 2 hours, 30 minutes
Frequency: Every day (one flight per day)

Hong Kong Dragon Airlines Tel: +81(03)6746-1001
Flight time: 2 hours, 35 minutes
Frequency: Wednesday, Thursday, Saturday and Sunday (one flight per day)

Okinawa - Taipei

China Airlines Tel: +81(98)863-1013
Flight time: 1 hour, 30 minutes
Frequency: Every day (2 flights per day)

TransAsia Airways Tel: 02(2557)5767

Flight time: 1 hour, 30 minutes
Frequency: Every day (one flight per day)

Mandarin Airlines Tel: +81(98)863-1013
Flight time: 1 hour, 30 minutes
Frequency: Wednesday and Saturday (one flight per day)

Outline of Okinawa
Okinawa Prefecture consists of 160 islands stretching 400 kilometers north to south and 1,000 kilometers east to west between the Pacific Ocean and the East China Sea, of which 41 are inhabited. The chain is known as the Ryukyu Islands.

Climate
Okinawa belongs to a subtropical climatic region and has an annual average temperature of 23.4 degrees Celsius, with warmer overall average temperatures than mainland Japan. A seasonal wind blows from the south in summer and from the north in winter.

Flight information
Domestic
Airplanes shuttle daily between Naha Airport and the mainland's major cities including Tokyo (Haneda), Osaka (Itami, Kansai), Kobe, Nagoya and Fukuoka. Flight time from major mainland cities to Naha Airport are indicated below. Transportation to remote islands is by either airplane or boat.

Flight times from major mainland cities to Okinawa

Tokyo (Haneda) to Naha 2 hours, 10-15 minutes
Osaka (Itami) to Naha 1 hour, 50 minutes
Osaka (Kansai) to Naha 1 hour, 50-55 minutes
Kobe to Naha 1 hour, 50 minutes
Nagoya to Naha 1 hour, 50 minutes-2 hours
Fukuoka to Naha 1 hour, 35 minutes

Flight times from Naha Airport to outer islands

Kume Island 35 minutes
Aguni Island 10 minutes
Miyako Island 50 minutes
Ishigaki Island 1 hour
Yonaguni Island 1 hour, 40 minutes

All Nippon Airways (ANA) Reservations and information in English:
Tel: +81(3)6741-1120 / +81(6)7637-6679 (daily 8:00 a.m. - 8:00 p.m.)

JAL Group (JAL/JTA/RAC) Reservations for domestic flights: Tel: +81(98)863-8522 *Press 6 for English
Reservations for international flights: Tel: +81(98)862-7411 *Press 6 for English (daily 8:00 a.m. - 7:00 p.m.)

Air Asia Reservations and information: <http://www.airasia.com/jp/en/home.page>

Jetstar Reservations and information: Tel: +81(50)3163-8538(daily 24hrs)
*Press 2 for English, 3 for Mandarin Chinese, 4 for Cantonese.

Peach Aviation Reservations and information
English: Tel: +81(3)4580-8181 (Monday-Friday 9:00a.m.-6:00p.m.)
Korean: Tel: +82(02)3483-4835 (Monday-Friday 9:00a.m.-6:00p.m.)
Yue Chinese: Tel: +852(3071)3564 (Monday-Friday 9:00a.m.-6:00p.m.)

Skymark Airlines (SKY) Reservations and information in English:
Tel: +81(50)3116-7370 (daily 9:00 a.m.-7:30 p.m.)

Solaseed Air (SNA) Reservations in English: Tel: +81(6)7637-8817 (daily 6:30 a.m.-10:00 p.m.)

Travel agents

Air Okinawa Co., Ltd
Services available in English
Address: 3F, Palette Kumoji Bldg., 1-1-1 Kumoji, Naha City 900-0015
Tel: +81(98)874-7666 Fax: +81(98)867-8001 E-mail: a.nagamine@air-okinawa.co.jp

HANS ADVENTURE Co.Ltd
Services available in Korean
Address: 3-6-11 Maejima, Naha City 900-0016 Contact: Kang Hansik
Tel: +81(98)927-9089 Fax: +81(98)927-9089 E-mail: okihans@gmail.com

International Transportation Co., Ltd.
Services available in Chinese, Taiwanese
Address: 2-26-10 Kume, Naha City 900-0033 Contact: Tommy Tang
Tel: +81(98)861-8686 Fax: +81(98)863-6303 E-mail: itcoka@yahoo.co.jp

Jino Tour
Services available in Korean
Address: 214-8 Nishinakahara Yone, Tomishiro City 901-0224
Contact: Yun Soo Hyun Tel: +82(02)775-0860 (Seoul) +81(98)987-1155(Okinawa)
Fax: +81(98)850-1877 E-mail: coldgin@dreamwiz.com
URL: <http://www.jinotour.com/> (Korean)

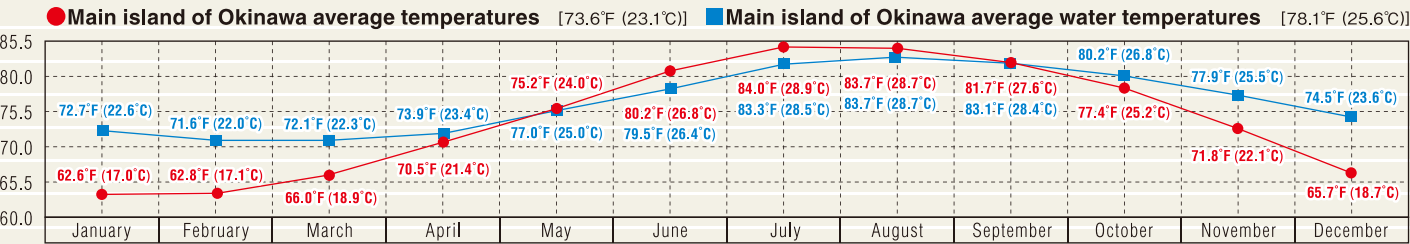
JM Land
Services available in Korean
Address: 109 D2 1-7-6 Oroku, Naha City 901-0152 Contact: Jung Sukwoo
E-mail: blackno11@nate.com Tel: +81(98)852-0335 Fax: +81(98)852-0336

J NABI
Services available in Korean
Address: 3F, Kumoji BK Bldg., 2-15-10 Kumoji, Naha City 900-0015
Contact: Jo Jeomryong Tel: +81(98)941-5985 Fax: +81(98)941-5986
E-mail: okinawaseil@hotmail.com

JTA TRADING CO.,LTD.
Services available in Chinese
Address: 4F, 3-24 Yamashita-cho, Naha City 900-0027
Contact: Meilin Maeshiro Tel: +81(98)857-8380 Fax: +81(98)857-8260
E-mail: liuqiu.jiankang@jtc.jalgroup.or.jp
URL: <http://www.jtap.jp> URL: <http://liuqiujiankang.jp/>

JTB OKINAWA Corp.
Services available in English, Chinese, Taiwanese, Korean
Address: 4-19-30 Omoromachi, Naha City 900-0006
Tel: +81(98)941-0496 Fax: +81(98)861-1308
URL: <http://www.jtb.co.jp/jtbokinawa/>
<http://www.japanican.com/index.aspx> (English / Korean / Chinese)
English> Contact: Wakako Nagata, Hayato Nishiguchi
E-mail: w_nagata@okw.jtb.jp / h_nishiguchi@okw.jtb.jp
Chinese, Taiwanese> Contact: Pengfei Ma, Hui Liang, Yuehong Cai
E-mail: p_ma@okw.jtb.jp / k_ryo@okw.jtb.jp / g_sai@okw.jtb.jp
Korean> Contact: Hon Gunjyon E-mail: k_hong@okw.jtb.jp

Okinawa Climate



* Addendum: Miyako Islands: average temperature 64.4°F (18.0°C) / average water temperature 78.8°F (26.0°C) / Ishigaki Island: average temperature 65.5°F (18.6°C) / average water temperature 79.0°F (26.1°C)

* Conversion °F=°Cx1.8+32, °C=(°F-32)÷1.8

Event Organizer Communication Support

Antenna, Ltd.

Services available in English, Korean, Chinese, French, Spanish, Italian, Portuguese

Address: 2F, 2-16-5 Makishi, Naha City 900-0013 Tel: +81(98)860-5218

Fax: +81(98)860-5219 URL: <http://www.antenna-okinawa.co.jp>

- Overseas shipping, travel and accommodation arrangements
- Translation and interpretation (escorts, tour guides, company visits, simultaneous interpretation, bilingual MCs)
- Human resource development programs, business seminars

ICE Okinawa

Services available in English,Chinese, French, Spanish, Portuguese

Address: Okinawa Industrial Support Center 404, 1831-1 Oroku, Naha City 901-0152

Tel: +81(98)859-0109 Fax: +81(98)859-0109 E-mail: info@iceokinawa.com

- Translation

OFFICE ICC, Ltd.

Services available in English, Korean, Chinese, Spanish

Address: 1-21-3 Gibo, Shuri, Naha City 903-0821 Tel: +81(98)887-0611

Fax: +81(98)887-0626 E-mail: icc-kikaku@gaea.ocn.ne.jp

- Translation and interpretation
- Guide interpretation and coordination services
- TV coverage interpretation and coordination services
- Conference and meeting planning and management

Okinawa Congress Corp.

Services available in English, Korean, Chinese, Taiwanese, French, Spanish,

Italian, Russian

Address: Nippon-Seimei Naha Bldg. 6F, 3-1-1 Kumoji, Naha City 900-0015

Tel: +81(98)869-4220 Fax: +81(98)869-4252 E-mail: icc-kikaku@gaea.ocn.ne.jp

- Conference and meeting planning and management
- Translation and interpretation (media-related production and planning)
- Personnel service (temporary staffing, outsourcing, clerical support, events, PR)
- Training and development program (business seminars and OA training)
- Exhibition coordination

OIGA (Okinawa Interpreter Guide Association)

Services available in English

Tel: +81(90)1942-7762 E-mail: info.english@oiga.jpn.com

URL: <http://www.oiga.jpn.com/english/>

RRC Corp.

Services available in Russian, English, Chinese, Korean, French, Portuguese, Spanish

Address: 2F 1-9-21 Higawa, Naha City 900-0022

Tel: +81(98)963-7030 Fax: +81(98) 963-7033 E-mail: okinawarrc@gmail.com

URL: <http://www.rrc-okinawa.com/eng/>

- Translation and interpretation (tour guides)

The Executive Link

Services available in English, Korean, Chinese, French, Spanish, Portuguese

Address: 2-10-14 Tsuji, Naha City, 900-0037 Contact: Saichi Inafuku

Tel: +81(98)869-9525 Fax: +81(98)869-9596 E-mail: xec-link@ona.att.ne.jp

URL: <http://home.att.ne.jp/star/xec-link/index-e.html>

- Translation and interpretation
- Conference and meeting planning and management

Okinawa Media Planning Co., Ltd.

Services available in English, French

Address: 1-1-18-20 Minatomachi, Naha City 900-0001

Tel: +81(98)863-5514 Fax: +81(98)863-5574

E-mail: ueta@okinawamedia.com

- General services and coordination for shooting, translation and interpretation, tourism related services

Okinawa Index

Services available in English

Address: 3-2-7 Mihama, Chatan 904-0115

Tel: +81(98)921-7593 Fax: +81(98)936-4900

URL: <http://www.okinawaindex.com>

E-mail: index@okinawaindex.com

- Casting, hair/make-up styling, vehicle charter (includes limousine) and other general services and coordination for shooting

Tedakhan

Services available in English

Address: Naha-shi IT Sozokan, 2-3-6 Mekaru, Naha City 900-0004

Tel: +81(98)869-5444 Fax: +81(98) 869-5445

E-mail: tedahan@ryukyu.ne.jp

- General assistance for the shooting of music videos and films, including equipment rental and travel arrangements

Via mare

Services available in English, French

Address: 1909-2 Sobe, Yomitan Village 904-0304

Tel: +81(98)956-8108 Fax: +81(98)956-8440

URL: <http://www.ryukyu.ne.jp/~annou/>

E-mail: annou@ryukyu.ne.jp

- General services for underwater shooting (available in high vision)

Transportation

Bus tours

*Audio commentary in English available for all tours (supply limited).

Naha Bus | Tel: +81(98) 868-3750 Fax: +81(98) 868-3754

Shuri Castle, Old Battlefields & Okinawa World Cave Park Tour

Destination: Shurijo Castle* ► Navy Underground Headquarters

► Himeyuri Monument (for lunch) ► Cornerstone of Peace

► Okinawa World cave park

Charge (lunch included): Adults ¥4,800 / Children ¥3,000

Length of tour: 7 hours, 30 minutes *Subject to separate charge

Okinawa Churaumi Aquarium & Nago Pineapple Park Tour

Destination: Okinawa Churaumi Aquarium ► Nago Pineapple Park

Charge: Adults ¥4,700 / Children ¥2,300

Length of tour: 9 hours

Okinawa Churaumi Aquarium & West Coast Tour

Destination: Ryukyu Mura* ► Manzamo Cliff ► Okashigoten (for lunch)

► Okinawa Churaumi Aquarium* ► Nago Pineapple Park or Okinawa

Fruit Land

Charge (lunch included): Adults ¥5,400 / Children ¥3,200

Length of tour: 10 hours, 15 minutes *Subject to separate charge

Okinawa Bus | Tel: +81(98) 861-0083
E-mail: kankou@okinawabus.com

Old Battlefields & Okinawa World Cave Park Tour

Destination: Navy Underground Headquarters ► Himeyuri Monument

(Himeyuri Peace Museum*) ► Yubido (lunch or snack)

► Peace Memorial Park ► Okinawa World cave park

Charge (lunch included): Adults ¥4,800 / Children ¥3,000

Length of tour: 6 hours *Subject to separate charge

Ocean Expo Park & Nakijin Castle Site Tour

Destination: Manzamo Cliff ► Hotel Chisan Resort Okinawa Churaumi

(for lunch) ► Ocean Expo (including Okinawa Churaumi Aquarium*)

► Nakijin Castle site ► Nago Pineapple Park

Charge (lunch included): Adults ¥5,400 / Children ¥3,200

Length of tour: 9 hours, 15 minutes * Subject to separate charge

World Heritage Sites In Naha City Tour

Destination: Tamaudun Royal Mausoleum ► Shurijo Castle ► Kinjocho

cobblestone path ► Shikina-en Royal Garden ► Tsuboya Pottery Street

and Makishi Public Market ► Omoromachi Monorail Station and

Duty-Free Shop* ► Okinawa Prefectural Museum and Art Museum*

Charge: Adults ¥4,500 / Children ¥3,500

Length of tour: 3 hours, 45 minutes *You can disembark at this bus stop

and leave the tour. Entrance fee for museums not included.

This tour operates every Tuesday, Thursday, Saturday and Sunday

Central Area Bus Tour

Destination: Ryukyu Mura ► Zakimi Castle ► Gala Aoiumi (for lunch)

► Okashigoten ► Bios on the Hill (pond cruise incl.)

Charge (lunch included): Adults ¥5,500 / Children ¥4,500

Length of tour: 7 hours This tour operates every Monday, Wednesday and Friday

Rental cars

ABC Rent a car Services available in English, Chinese

Tel: +81(98)859-5555

URL: <http://www.abc-car.net/en/index.htm>

Budget Rent-A-Car Services available in English, Chinese

Tel: +81(98)857-1813 Fax: +81(98)857-1630

URL: <http://www.budget.com/budgetWeb/home/home.ex?HP>

Fuji Rent-A-Car Services available in English

Tel: +81(98)933-0370 Fax: +81(98)933-0368

E-mail: fujiokinawa01@yahoo.co.jp

Matsuda Rent-A-Car Services available in English

Tel: +81(98)858-1536 Fax: +81(98)857-1784 E-mail: miyakem@mazda-rentacar.co.jp

URL: <http://www.mazda-rentacar.com/>

Nissan Rent-A-Car Services available in English

Tel: +81(98)867-4123 Fax: +81(98)866-3575 *Inquiries through FAX only

URL: <https://nissan-rentacar.com/english/>

OTS Rent-A-Car Services available in Emglish, Chinese

Tel: +81(98)856-8877 Fax: +81(98)856-7777

URL: <http://www.otsrentacar.net:80/>

Toyota Rental Lease Services available in English

Tel: +81(98)857-0100 Fax: +81(98)858-5311

URL: <http://rent.toyota.co.jp/en/index.html>

Taxis

Okito Kyodo Radio Co. Services available in English, Chinese

Contact: Masaru Harold Janiszewski / Mikiee

Tel: +81(98)946-5477 (call center) E-mail: okitou@giga.ocn.ne.jp

Vehicle hire

Island Life Concierge Services available in English

Limousines and other vehicles can be hired upon request. More options such as dinner cruises and fishing charter boats are also available.

Tel: +81(98)916-8593 Fax: +81(98)936-4900

E-mail: info@islandlifeconcierge.com URL: www.islandlifeconcierge.com

Convention Facilities



Okinawa Convention Center

Address: 4-3-1 Mashiki, Ginowan City 901-2224

Tel: +81(98)898-3000 Fax: +81(98)898-2202

URL: <http://www.oki-conven.jp/en/>



Bankoku Shinryokan

Address: 1792 Kise, Nago City 905-0026

Tel: +81(98)053-3155 Fax: +81(98)053-3163

URL: <http://www.shinryokan.com>

2F Okinawa Industrial Support Center 1831-1 Oroku, Naha City, Okinawa, Japan 901-0152
 Tel: +81(98)859-6130 Fax: +81(98)859-6222 E-mail: globalPR@ocvb.or.jp (For inquires on Tourism in general)
<http://www.ocvb.or.jp/> E-mail: convention-info@ocvb.or.jp (For inquires on MICE)

Okinawa Convenion Center

4-3-1 Mashiki, Ginowan City, Okinawa 901-2224
 Tel. +81(98)898-3000 Fax. +81(98)898-2202

Bankoku Shinryokan

1792 Kise, Nago City, Okinawa 905-0026
 Tel. +81(98)053-3155 Fax. +81(98)053-3163

Tokyo Office

3F Tokyo Kotsu-Kaikan BLDG, 2-10-1 Yuuraku-cho,
 Chiyoda-ku, Tokyo 100-0006
 Tel. +81(35)220-5311 Fax. +81(35)220-9720

Western Japan Office

21F Osaka Ekimae Dai 3 BLDG, 1-1-3-2100
 Umeda, Kita-ku, Osaka City, Osaka 530-0001
 Tel. +81(66)344-6829 Fax. +81(66)346-1784

Korea Office

10F Korea Tourism Organization BLDG,
 40, Cheonggyecheonno, Jung-gu, Seoul 100-180, Korea
 Tel. +82(23)18-6330 Fax. +82(27)53-8751

Taipei Office

Room E, 4F., No. 148. Songjiang Rd.,
 Zhongshan District, Taipei City 104, Taiwan (R.O.C)
 Tel. +886(2)2541-1011 Fax. +886(2)2541-1009



Okinawa Prefecture

Okinawa Prefectural Government Tourism Promotion Division

1-2-2 Izumizaki, Naha City, Okinawa 900-8570
 Tel. +81(98)866-2764 Fax. +81(98)866-2765

Okinawa Prefectural Government International Convention Promotion Team

3F Tokyo Kotsu Kaikan BLDG, 2-10-1 Yuuraku-cho, Chiyoda-ku, Tokyo 100-0006
 Tel. +81(33)218-3775 Fax. +81(33)218-3778

Okinawa Prefectural Government Hong Kong Representative Office

Unit 1211, 12F, Prosperity Millennia Plaza, 663 King's Road, North Point H.K.
 Tel. +85(22)968-1006 Fax. +85(22)968-1003

Okinawa Prefectural Government Shanghai Representative Office

No.1603 Huansheng, Mansion, 398 Hankou Rd., Shanghai 200001
 Tel. +86(21)6351-0231 Fax. +86(21)6350-7369

Okinawa Industry Promotion Public Corporation Beijing Representative Office

Room 619, Tower B, Lucky Tower No.3 Dongsanhuan Beilu, Chaoyang District, Beijing 100004, P.R.China
 Tel. +86(010)6466-8679 Fax. +86(010)6466-6693

Japan National Tourism Organization

Sydney

Suite 1, Level 4, 56 Clarence Street,
 Sydney NSW 2000, Australia
 Tel: +61-2-9279-3177 Fax: +61-2-9279-3166

London

5th Floor, 12/13 Nicholas Lane, London, EC4N 7BN, U.K.
 Tel: +44-020-7398-5670 Fax: +44-020-7626-0224

Paris

4, rue de Ventadour 75001 Paris, France
 Tel: +33-01-42-96-20-29 Fax: +33-01-40-20-92-79

*JNTO has other overseas branch offices such as, Seoul, Beijing, Shanghai, Hong Kong, Bangkok and Singapore. For more information, Please refer to <http://www.visitjapan.jp/>.

Frankfurt

Kaiserstrasse 11, 60311 Frankfurt am Main, Germany
 Tel: +49-069-20353 Fax: +49-069-284281

New York

11 West 42nd Street, 19th Floor, New York, NY 10036, USA
 Tel: +1-212-757-5640 Fax: +1-212-307-6754

Los Angeles

340 E. 2nd Street, Little Tokyo Plaza, Suite 302,
 Los Angeles, CA 90012 U.S.A.
 Tel: +1-213-623-1952 Fax: +1-213-623-6301

Toronto

481 University Avenue, Suite 306,
 Toronto, Ontario M5G 2E9 Canada
 Tel: +1-416-366-7140 Fax: +1-416-366-4530

For More Detail info & Inquires Process for travel industry-related parties to obtain support for familiarization tours to Okinawa.



OCVB makes a decision based on a cost-benefit analysis of the advertisement, the content and coverage of the medium, and the budget allocated to the advertisement.

*Okinawa Prefectural Government